

RUMBLE SHEET

NOVEMBER/DECEMBER 2025

VOLUME 66

ISSUE 6

Grandchildren of Marilyn & Scott Gerber:



Lula(7), Pearse(3), Hadley(5), Otto(4), Kayla(5)

MODEL A FORD CLUB OF
LONG ISLAND

Model A Ford Club of Long Island

General Information

Membership & Dues

Annual dues is \$35 per membership (includes, husband, wife, and minor children) and \$17.50 for members over 80 years old. Dues paid after October 1st will be applied to the next calendar year.

For more information contact Dennis Fagan by email @ dennishfagan@gmail.com. Mail dues to Dennis Fagan 249 McConnell Ave Bayport, New York 11705

Membership in both MAFCA (Model A Ford Club of America) www.mafca.com and MARC (Model A Restorers Club) www.modelaford.org is highly recommended. Both provide many benefits as well as bi-monthly publications

Monthly Membership Meetings

General membership meetings will be held at the Bethpage Senior Center 103 Grumman Rd West Bethpage, NY 11714 on the first Wednesday of each month. The annual meeting for electing MAFCLI officers will be held at the November meeting. A quorum of at least 10 % of membership must be present at the meeting. All meetings will begin promptly at 7PM.

Directions To Bethpage Senior Center

Take the LIE or Northern State Parkway to South Oyster Bay Road. Take this southbound until you cross over the LIRR Main Line Tracks. Make the next left at the traffic signal, Grumman Road. Follow this down and the center will be on your left-hand side (or just punch the address into your GPS).

Executive Board Zoom Meetings

These meetings are held on the last Tuesday of each month. Members may request an invitation to attend the meeting by submitting a request to the president.

Editors Statement

The Rumble Sheet is the official publication of the Model A Ford Club of Long Island. Opinions expressed in the Rumble Sheet are not necessarily the policy of the club. Articles may be copied for non-profit use, provided credit is given to the noted author and the MAFCLI.

Advertising Fees Per Year

Full Page:	\$100 Club Members	\$200 Non-Club Members
Business Card :	\$30 Club Members	\$60 Non-Club Members

For Sale or Wanted Ads

Ads are free for members only. Ad must be automotive related and price must be stated. The editor reserves the right to edit ads. Ads will be printed as space permits and will run automatically for 3 issues unless the editor is notified.

Deadline For The Rumble Sheet

The Rumble Sheet is published bi-monthly. Please email all articles to the editor by the 15th of January, March, May, July, September and November for publication in the next issue. Send articles to Greg Volpe at grevol@optonline.net.

Disclaimer From The Board

Garage clinics are instructional sessions authorized by the board and generally conducted by the technical VP or his appointees. They are generally scheduled in the newsletter whenever possible. Work parties are groups of friends to undertake repairs and are not authorized by the board and as such the club is not liable for any occurrences arising from them.

MODEL A FORD CLUB of LONG ISLAND MISSION STATEMENT

As per our corporate charter, the mission of The Model A Ford Club of Long Island Inc :

- 1) Promote interest in the ownership, operation and restoration of the Model A Ford
- 2) Give and promote entertainment, social affairs, celebrations, exhibitions, games, amusements of any and all descriptions for the general enjoyment of members.
- 3) Provide accurate, historical and technical information about the Model A Ford.
- 4) Publish a periodic newsletter containing pertinent and newsworthy information of interest to the membership and other owners of the Model A Ford.

Model A Ford Club of Long Island Board Members

----- 2025 ELECTED OFFICERS -----

President	Ray Leblond	ny31fordor@gmail.com	(718) 213-3201
Technical Vice President	Bob Bidonde	modela1931@aol.com	(631) 471-9551
Activities Vice President	Jon Reiff	31aaflatbed@gmail.com	(516) 592-3911
Treasurer	Tom Lopez	tlopez1945@aol.com	(718) 672-2369
Recording Secretary	Mike Sarlo	msarlo@verizon.net	(516) 297-2025
Corresponding Secretary	Debby Duprez	wduprez@optonline.net	(631) 265-2597
Rumble Sheet Editor	Greg Volpe	grevol@optonline.net	(631)885-2469
Sr. Director	Charlie Tencza	ctbadguy@aol.com	(718) 470-6710
Directors	Anthony Lombardo	alombar4@optonline.net	(516) 308-3856
	Wayne Duprez	wduprez@optonline.net	(631) 258-3584
	Sam Zito	dellmanZ@aol.com	(516) 903-7853

-----APPOINTED POSITIONS-----

Membership Chairperson	Dennis Fagan	dennishfagan@gmail.com	(631) 300-7113
50/50 Raffle	Sam Zito	dellmanZ@aol.com	(516) 903-7853
Web Master	Anthony Lombardo	alombar4@optonline.net	(516) 208-3856
Club Apparel	----- <u>VACANT POSITION</u> -----		
Club Historian	Tom Lopez	tlopez1945@aol.com	(718) 672-2369
Model A Day	Jim Sharkey	jsha234444@aol.com	(516) 997-6310
Chief Judge	Jim Sharkey	jsha234444@aol.com	(516) 997-6310
Refreshments	Greg Barclay	glbarclay64@gmail.com	(516) 495-4960

PRESIDENTS OF THE MODEL A FORD CLUB OF LONG ISLAND

1959 - 1960 Bill Evans

1961 Jim McKeon

1962 Charles Strieberg

1963 Doc Lee

1964 Bill Ahrens

1965 Bill Bramlich

1966 Ed Brown

1967 Al Eckhart

1968 Sherman Levitt

1969 Dan Kasten

1970 Frank Clemente

1971 Harold Poppe

1972 Art Sinisi

1973 Bob Bidonde

1974 - 1975 Cliff Moebius

1976 Dave McClellan

1977 Frank Canty

1978 Charles Ciravolo

1979 Fred Meiners

1980 Dick Ranno

1981 Jack Hehman

1982 Bob Bader

1983-1984 Ron Ridolph

1985 -1986 Frank Ziegler

1987-1988 Ray Leblond

1989 -1990 Walter Hawkins

1991-1992 Tom Lopez

1993-1994 George Mahler

1995-1996 Tom Catania

1997-1998 Frank Giannone

1999-2000 Lois Ziegler

2001-2002 Janice Slott

2003-2005 Tom Lopez

2006-2007 Walter Blessing

2008-2010 Angela Adler

2011-2014 Peter Osmanski

2015- 2017 Jerry Lehecka

2018-2021 Jon Reiff

2022- PRESENT Ray Leblond

MARC-MILEAGE PROGRAM GUIDELINES

By Bruce Adams

Purpose:

The purpose of the MARC Mileage Program is to offer national recognition for all miles driven in a Model A Ford. There is no intent to supersede or cancel any regional or local driving programs now in existence. The program seeks to further them by offering a mileage-based recognition for all registered MARC vehicles.

General:

- 1) All Model A's owned by MARC members and registered in the MARC Mileage Program, and which meet the following standards, are eligible.
- 2) Of original manufacture from 1927 through 1931.
- 3) Titled or registered as a Model A in accordance with respective state requirements.
- 4) Authentic in overall appearance , with a minimum of the following basic features:
 - A) Original Ford four-cylinder engine produced from 1927 through 1934
 - B) Body style for year of manufacture.

Rules For Miles Driven:

- 1) All ground mileage is credited, except for non-emergency tow.
- 2) All credited mileage is cumulative from year to year and to each higher award level.
- 3) Mileage to be credited must be attested.
- 4) No mileage is credited for any period of time that the owner is not a member of the Model A Restorers Club.
- 5) Mileage does not have to be updated every year to maintain eligibility.
- 6) Mileage is accumulated through the reporting of the odometer reading as of December 31st of each year.
- 7) The MARC Mileage Program Chairman is the final authority on mileage credit and awards.

National Awards :

- 1) Award recognition begins at 2,000 miles; the second award level is 5,000 miles and subsequent levels are each 5,000 miles thereafter.
- 2) A round blue plaque is awarded with the first mileage level, and a replacement mileage tab is awarded thereafter.

Registration:

A fee of \$1.00 is required at the time of vehicle registration. MARC shall maintain the original registration form as a permanent record for each vehicle registered in the program. A Vehicle transferred to a new MARC member who re-registers the car may, if the new owner wishes , maintain it's mileage award level and continue eligibility for further awards in accordance with the rules.

Brochure and Registration Form:

Questions concerning the MARC Mileage Program may be directed to Bruce Adams ,MARC Long Island Mileage Program Coordinator.

Thank You

Bruce Adams

Sailbruce@aol.com

UPCOMING EVENTS

Wednesday December 3rd : General Membership Meeting 7-9pm @ The Bethpage Senior Ctr 103 Grumman Rd W Bethpage N.Y. Contact Jon Reiff.

Sunday December 7th : The MAFCLI Will Be Holding Our Annual Holiday/ Installation Dinner At The Irish Coffee Pub 131 Carlton Ave East Islip NY From 5-9 pm. Complete Sit-Down Dinner \$55 PP. This Will Also Be Your Last Chance To Drop Off Your Toys For Tots Donations. Contact Jon Reiff For More Information.

Saturday/ Sunday December 13th & 14th : It's A Wonderful Life In Patchogue. Be Part of this 1940's Interactive Experience On Main Street In Patchogue From 11AM- 5 PM Both Days. For Information See Page #12 In This Newsletter.

Thursday December 25th : It's Christmas Day. Although Your Model A Family Loves You & I'm Sure You Love Us. Take This Day To Be With Your Spouse, Children, Parents, Aunts, Uncles, Cousins, Grandchildren, & Great Grandchildren. Enjoy The Day, Happy New Year & We will See You In 2026!

Wednesday January 7nd : General Membership Meeting 7-9pm @ The Bethpage Senior Ctr 103 Grumman Rd W Bethpage N.Y. Contact Jon Reiff.

CHECK THE CLUBS WEB-SITE FOR THE LATEST UP-DATES

MODEL A FORD CLUB OF LONG ISLAND

GENERAL MEETING MINUTES

11/5/2025



President Ray Leblond called meeting to order at 7:00PM.

Meeting was opened and John led the club with the Pledge of Allegiance and a prayer.

Minutes of the October 1st meeting were bypassed.

New Members/ Guests: Aden, 2nd meeting and Rays brother Pete.

Corresponding Secretary: Cori Reiff had heart surgery and is recovering. A card will be sent. Greg Volpe's mother passed. Card was sent. Charlie Tennin's son had surgery.

Treasurer's Report: The report was read and accepted by membership.

Club Historian: Working on 100th celebration of the Model A.

Model A Day Report: Jim Starky, no report.

Club Activities: Please check the Club website for details on upcoming events and RSVP to Jon Reiff or Wayne Duprez as needed.

Toys for Tots collection has started.

Old Business: election results: Ray Leblond President. Bob Bidonde, VP Technical. Mike Sarlo Recording Secretary Jon Reiff VP Activities. Debby Duprez Corresponding Secretary. Tom Lopez Treasurer, Greg Volpe Rumble Sheet Editor, Charlie Tencza 3-year Director, 1-Year Directors (Need 3) Wayne Duprez, Anthony Lombardo, Sam Zito,

New Business: Free stuff on table near coffee.

Presentation of certificate to Katie Presti for the stone at the Model A Museum in Joe Presti's name.

Technical Report: Bob and Joyce Sarlo presented Model A Ladies quiz

Cathy Bidonde won the Ladies quiz.

Ray Leblond won the 50/50.

Meeting was adjourned at 8:30 PM.

By Mike Sarlo



Presidents Message

By Ray Leblond

The past year has been filled with great activities and tours due to the extraordinary leadership of our Activities Director Jon Reiff. Bob Bidonde has continued to provide the club with very informative tech talks and quizzes. Our Rumble Sheet Editor, Greg Volpe has upped the ante again with an awesome newsletter that has now grown to more than 40 pages. Anthony Lombardo has done a fantastic job of maintaining our website with continuing improvements.

This upcoming year we have the opportunity to attend the National Tour in the Finger Lakes Region in NYS, May 11 -May 15. Hopefully many of you will be joining the group. Don't forget the New England Meet in September to be held in Southbridge Ma.

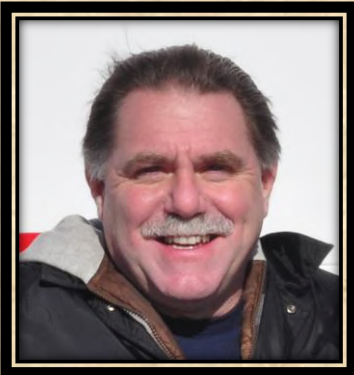
This past year we've lost a number of our long time and beloved club members. We will miss them all.

We still need someone to manage the club store!

Looking forward to a greater year ahead, let's get the A's out on the road and enjoy!

Happy Holidays and a Happy & Healthy New Year.

Ray Leblond, President



LETTER FROM **THE EDITOR**

BY GREG VOLPE

As we close out 2025, we still have two holiday events on our schedule. The Holiday/Installation Dinner, Sunday December 7th, and two days of It's A Wonderful Life celebration in Patchogue, Saturday & Sunday December 13th & 14th see Page #12 of this newsletter. We will also be announcing a date for a Toys for Tots drop-off when more details become available.

Club elections were held at the last general club meeting for the executive board positions. The positions of President, Activities VP, Technical VP, Sr Director, Treasurer, Recording Secretary, Corresponding Secretary, & Editor, ran unopposed. Congratulations to Anthony Lombardo, Wayne Duprez and Sam Zito for winning re-election to their director positions.

The club still has an appointed position available for Club Store Manager. If any member is interested in filling that position contact any board member for more information.

Lastly, from the entire membership at The Model A Ford Club of Long Island we wish you and your family a Merry Christmas and a Happy & Safe New Year.

Greg Volpe, Editor

MODEL A FORD CLUB OF LONG ISLAND HOLIDAY/INSTALLATION DINNER

SUNDAY DECEMBER 7th 5-9 pm @ THE IRISH COFFEE PUB


131 CARLTON AVE EAST ISLIP NY



IRISH COFFEE
PUB

The Event Will Feature A Complete Sit-Down Dinner With A Cash Bar Available. The Cost Of Dinner Is \$55 Per Person. We Will Also Be Swearing In Elected Executive Board Members For The 2026 Calander Year. Please RSVP To Jon Reiff To Reserve Your Seat. Send Check Made Out To MAFCLI To: Jon Reiff 200 Belvedere Drive Massapequa Park, NY 11762. Please Remit Payment By 12-1-25

JOIN WITH YOUR FELLOW MODEL A CLUB MEMBERS
MAKE A CHILD SMILE THIS HOLIDAY SEASON
BY DONATING NEW UNWRAPPED TOYS



Please We Need
Your Help. Show
The Children They
Are Not Forgotten

TOYS FOR TOTS

PLEASE BRING YOUR DONATIONS TO THE NEXT
CLUB MEETING OR CONTACT ANY BOARD
MEMBER TO ARRANGE A PICKUP OR DROPOFF



"It's A Wonderful Life In Patchogue" is a weekend festival that takes place the second weekend of December.

It is a 1940's themed, all-day affair, filled with holiday shopping, music, interactive events & live re-enactments inspired by the film.

There will even be events going into the evening and nightlife with the many restaurants Patchogue Village has to offer.

This family-friendly event will bring people from throughout the island to Patchogue Village, to celebrate community, collaboration, compassion, integrity, & pride.



Dates - Saturday - Sunday Dec. 13 & 14

Times -11:00 AM – 5:00 PM Both Days

Meet At Patchogue Historical Society Museum

160 West Main Street, Patchogue

Lower Level, Rear Entrance, Off Parking Lot

WE ARE STILL LOOKING FOR A CLUB STORE MANAGER

Start Your Own Business.

ARE YOU IN SEARCH OF A REWARDING CARRIER ?
DID YOU EVER WONDER WHAT COULD HAVE BEEN ?
ARE YOU TIRED OF WORKING FOR SOMEONE ELSE ?
THE TIME HAS COME, BE THE NEXT SUCCESS STORY.



THE MAFCLI IS LOOKING FOR A PERSON OR
PERSONS TO RUN THE CLUB APPAREL STORE.
THE PAY IS NOT MUCH, THERE ARE NO
BENEFIT'S EXCEPT THE SATISFACTION OF A JOB
WELL DONE. NO PRIOR EXPERIENCE IS
NECESSARY. LEARN AS YOU GO. IF YOU ARE
INTERESTED CONTACT ANY BOARD MEMBER
FOR MORE INFORMATION.

NOTABLE QUOTES

FOOD FOR THOUGHT



"Life is a series of experiences, each one of which makes us bigger, even though sometimes it is hard to realize this. For the world was built to develop character , and we must learn that the setbacks and grieves which we endure help us in our marching onward." - Henry Ford

"I find that the harder I work, the more luck I seem to have." - Thomas Jefferson



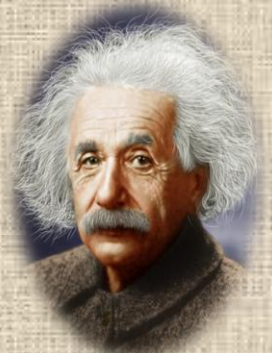
"There are no secrets to success. It is the result of preparation, hard work, and learning from failure." - Colin Powell

"It's not whether you get knocked down, it's whether you get up." - Vince Lombardi



"Who you are tomorrow begins with what you do today "All our dreams can come true if we have the courage to pursue them." - Walt Disney

"Anyone who has never made a mistake has never tried anything new." - Albert Einstein





RIESTERER'S BAKERY

WEST HEMPSTEAD, NY



The Model A Ford Club of Long Island was invited to help Riesterer's Bakery celebrate their 94th anniversary in business. This 3-generation bakery has been serving the Long Island community since 1931. The bakery's Model A connection began in 1931 when Karl Jr's grandfather bought his first Model A because he liked the way they drove. Then through the years Model A's were passed down through the generations. Karl Jr's son, Karl August, now owns his own 1930 Roadster making them a 4-generation Model A Family. Congratulations to Riesterer's Bakery for being the Best & Oldest Bakery on Long Island.



YAPHANK HISTORICAL SOCIETY

POLICE GARAGE

VP-Activities Director Jon Reiff arranged an enjoyable cruise to Yaphank on Sunday 10/19/2025. I counted 9 Model A's at the Shell Gas Station Police Museum in Yaphank. After an hour or two at the museum, Jon led us on a scenic tour around Southaven State Park that took us through an 1832 Long Island Railroad Bridge that was so narrow our model A's barely fit through. Then we passed the Upper Lake in Yaphank where we stopped off for an excellent lunch at The Millhouse Inn.

By Bob Bidonde



FALL FOLIAGE RUN 2025

Every year around this time the weather gets colder, the days get shorter, and the leaves start to change colors. Yes, it's time for the Fall Foliage Run. We met at McDonalds in Syosset at 9:30 am and by 10:00 am we were on our way. Under the direction of Joe and Chris Izzo we toured through the beautiful tree lined streets of Oyster Bay. We headed through the Village of Laurel Hollow then on to a rest stop and a Photo Opp at The Marina at Teddy Roosevelt Park. We then headed southwest passing through beautiful Muttontown, from there we headed into Old Westbury. The final stop was Applebee's for lunch. During this 3-hour 30-mile tour we were blessed with some of the best fall foliage on Long Island. Thanks to Jon Reiff for setting up this run and thanks to Joe & Chris Izzo for leading us on this tour.

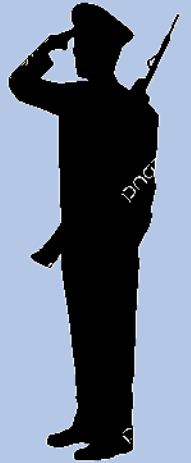


FALL FOLIAGE RUN 2025



ST JAMES VETERANS DAY PARADE

If it's VETERAN'S DAY, then there is a parade on our schedule. The St James American Legion Post not only invited The Model A Ford Club of Long Island to participate in the parade, they asked us to lead the procession and transport a couple of their local veterans. Afterwards we stopped off for lunch at The Ford Garage at the Smith Haven Mall. It was a nice way to honor the retired women & men of our military and thank them for their service.





63rd ANNUAL PATCHOGUE Holiday Parade



The holidays would not be complete without our Model A Ford Club attending the 63rd Annual Patchogue Village Christmas Parade. This event doesn't get old; it only gets better. If you've never participated in this once-a-year high energy event you must put it on your to do list for next year. The theme of the evening was "Christmas Past". We met at the usual starting point to decorate our vehicles, then headed out to claim our spots in the parade procession. Jon led our club with 13 Model A's and 38 members in tow. The weather was a seasonable 36 degrees which makes it feel like Christmas. The streets were lined with spectators cheering as we started down the parade route. The bands were playing; the marchers were marching; you could feel the Christmas spirit in the air. Oh yeah, did I mention that there were Model A's? After the parade we headed over to Satellite Pizza in Bayport for a little holiday type party. Thanks to Chris & Donna for arranging this event.



63rd ANNUAL PATCHOGUE Holiday Parade



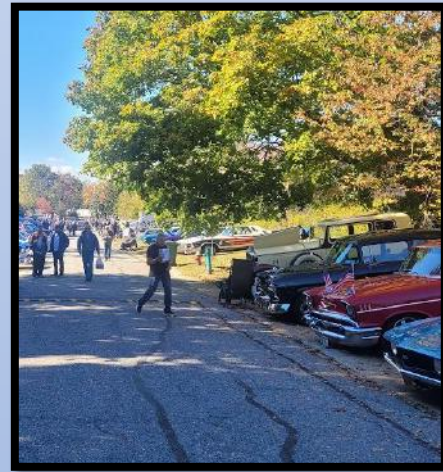
TOBAY BEACH CAR SHOW



On 10/5/25 Club members Donna & Chris headed to the Tobay Beach Car Show. The parking lot was filled with cars of every era. They reported it was a great car show and a great day at the beach.



AACA CAR SHOW WILLISTON PARK



Antique Cars Meet Antique Planes at Klein Kill Airstrip

By Bob Cassara]

Every summer, a unique event takes place at a privately owned grass airstrip in **Klein Kill, NY**, about 140 miles north of New York City. The runway, about 4300 feet long and running north–south, is as simple as it gets — no air traffic control, just a windsock.

What struck me most at Klein Kill was how much airplane owners resemble antique car enthusiasts. They restore and maintain these machines from another era with the same care (and expense) that we pour into our cars. The only real difference? Their toys take flight — and they need a runway to enjoy them.

Among the antique planes I spotted a real curiosity: a **Pietenpol**, built with a Model A engine mounted in reverse so the propeller bolts to the crankshaft where the flywheel would normally go.

The day reminded me how naturally antique cars and planes complement each other. Both preserve history in motion. Both draw crowds of curious onlookers. And both give their owners the same satisfaction of bringing old technology back to life.



Technical Presentation

By Bob Bidonde



Tips Tricks and Fixes now has a new Table of Contents. This file is an index of the subjects covered in 16 Tips, Tricks & Fixes from presentations given at club meetings. This new feature is now available on our web site and should assist members in accessing information that pertains to particular areas of interest.

Model A Ford Technical
Presentations:

See Technical Section
On Our Club's Website

www.modelalongisland.com

Compression Test Preparation

- ☐ Hand brake on
- ☐ Transmission into neutral
- ☐ Ignition off
- ☐ Remove all spark plugs
- ☐ Fully open the carburetor's throttle using the throttle lever on the steering column
- ☐ Open both sides of the hood
- ☐ Gather a note pad & pen
- ☐ Engine should be at approximately 70°F

Compression Test Gauge Type

- Recommend a gauge with a flexible hose that screws into the spark plug holes
- Gauge should have a compression hold & release valve
- Spark plug threads in Model A's cylinder head are 7/8-18
- Compression gauges are equipped for use in modern 14mm spark plug holes
 - A 14mm to 7/8-18 thread adapter is necessary
 - Adapter is available from Model A parts dealers
- Attach the adapter to the hose & snug it tight so it will not unscrew during the test



Compression Test Procedure

- ☐ Screw the gauge into the #1-Cylinder spark plug hole
- ☐ Using the starter motor, turn the engine over until the gauge reading stops advancing & record the gauge pressure reading
- ☐ Release the gauge pressure
- ☐ Repeat this procedure in Cylinders 2, 3 & 4
- Variation in gauge readings between cylinders should not exceed 5 PSIG
 - ☐ If pressure variation exceeds 5 PSIG or the pressure is below specification, squirt 3 Ounces of motor oil into the discrepant cylinder & repeat the test



Compression Test Values

Ratio	Minimum PSIG	Calculated PSIG @ Sea Level	High PSIG	Variation Between Cylinders PSIG
4.22:1	50	62	76	5
5.5:1	50	81	95 or higher	5
6.0:1	50	88	102 or higher	5

- Estimate of compression pressures (PSIG = Gauge Pressure Reading in PSI)
$$\text{Atmospheric Pressure} \times \text{Compression Ratio} = \text{Pressure}$$

Example At Sea Level: $14.7 \text{ PSI} \times 5.5 = 81 \text{ PSI}$ Bob Bidonde 11/2025
- Actual pressures will vary upward from estimated pressures due to variations in fluid dynamics, cylinder volume & temperature
- Minimum PSIG is from experience that the Model “A” engine will run at 50 PSIG for local club events, but 50 PSIG is the threshold for a complete engine rebuild

At Completion of The Test

- ☐ Reinstall the spark plugs
- ☐ Close the carburetor’s throttle using the throttle lever
- ☐ Close the hood
- ☐ Recommend that you record the test results into a log for your Model “A”
 - ☐ Log the mileage, date, pressure readings by cylinder & any maintenance taken as a result of the test
- *If it was necessary to squirt oil into a cylinder or two, expect lots smoke from the tailpipe on the 1st engine startup after the test*

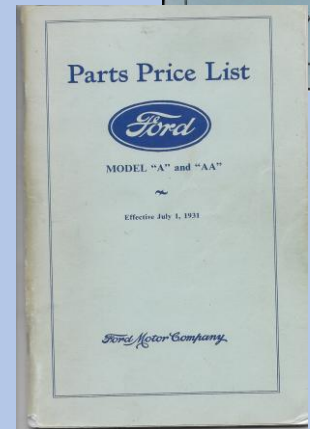
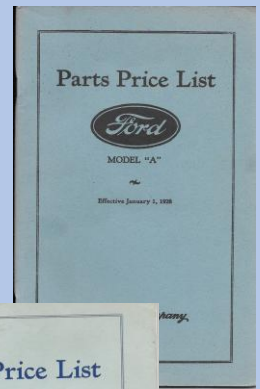


Factory Part Numbering System

Dating Jargon & Parts Price Lists

Ballpark dating of part numbers & vehicles often used

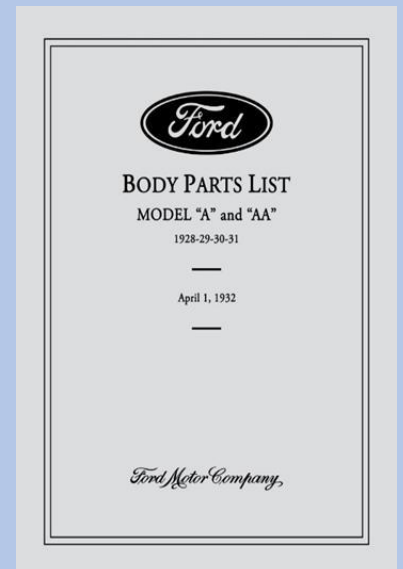
- “Early” in a year is January thru April; “Mid” is May thru August; “Late” is September thru December
- “AR” is incorrectly used to indicate 1927 & 1928 vehicles. The real meaning follows
- Authentic part numbers are in the Parts Price Lists for the chassis and body
- Chassis Parts Price List of January 1, 1928, has 46 pages of parts for all “A” & “AA” vehicles
- Chassis Parts Price List of July 1, 1931, has 84 pages of parts for 1928 thru 1931 “A” & “AA” vehicles
- Parts Price Lists were published in each “A” & “AA” production year & some reprints are available from dealers. Recommend getting the later list first



Body Parts Price List

Reprint is available from “A” parts dealers

- Lists all car & truck body part numbers including parts of hoists & lifts
- 256 pages with lots of illustrations
- Photos of “A” & “AA” bodies & equipment
- Also lists interior furnishings
- Part number characteristics are the same as chassis part numbers
- A-35455-D Door Assembly, RH
- AA-199500-A Gate Assembly, Tail
- Useful to deduce interchangeability



The Meaning of “AR”

Parts – Dating & Numbering System

- Part numbers are engineering drawing numbers: **A**-1015 **AA**-4610 & so forth are initial part drawing releases
- A-1015-**A**, A-4610-**B**, A-8100-**C** & so forth are existing production drawings with minor form, fit or processing revisions
- New part designs have new drawing numbers
- A-7508-**AR**, AA-4610-**BR**, A-10104-**CR** & so forth have an **R** to indicate such parts are no longer in vehicle production, but are stocked for service repair of older vehicles
- A-22367-**S2**, A-21136-**S4**, A-27803-**S7** & so forth are standard parts where the **S** numbers are finish designations
 - S2 = Raven; S4=Raven & Black Paint; S7=Cadmium Plate
 - Table of all finish designations is in the parts price lists





TAYLOR TALKS

TECHNICAL

NEW CAR DIRECTIONS

This instruction sheet was glued inside the passenger side of the front windshield of Model A's and AA's at the end of the production line. Ford form number 3027 was used on passenger vehicles and 3028 form was used on truck stickers.

SPEED: Avoid high speeds while the car is new. To obtain best results, it should not be driven faster than 30 to 35 miles per hour for the first 500 miles.

OIL: Keep the oil at "F" on the measuring rod, especially during the first few hundred miles. Never let it get below the mark "L". Remove measuring rod and wipe with a dry cloth before testing the level. Oil should be changed after the first 500 miles and every 500 miles there-after.

BRAKES: This car is equipped with 4-wheel mechanical brakes which are quick and positive in action. Keep the car under control at all times to avoid the necessity for sudden application of brakes which might result in discomfort to passengers or collision from rear.

FAN BELT: Do not tighten fan belt. The V-type fan belt does not require tight adjustment for proper operation. Too tight an adjustment will result in excessive wear on fan belt and generator bearings, particularly at higher speeds. (*The water pump was not mentioned.*)

TIRES: For easy riding qualities, proper braking and long life keep the tires, both front and rear, inflated to 35 pounds.

INSPECTION: To ensure best results, have an Authorized Ford Dealer (preferably the Dealer from whom you purchased your car) inspect this car and make necessary minor adjustments after the first five hundred miles of running.

TRIPLEX SAFETY GLASS: Triplex Safety Glass is used in this car for your protection. Do not replace Triplex Safety Glass with plate glass. If replacement is necessary use Triplex Safety Glass. (*It does not mention that it was only used for the windshield.*)

DRIVE SAFELY
FORD MOTOR COMPANY

By Ed Taylor

This Trip Log Appeared In A Past Issue Of The Rumble Sheet

The trip was to Virginia Beach to attend the MARC National Meet.

1987 VIRGINIA BEACH DIARY

by Bob "Virginia Beach" Bidonde

June 23



Odometer reading- 8534 miles
Departed from East Northport Dunkin Donuts at 4:10 AM
Families present: Bidonde, Ziegler, Case, Bell
Hawkins and Bruseau

Departed Valley Stream Police Barracks at 5:10 AM
Families present: LeBlond, Berkeley and Mahler
Cross Verrazano Narrows Bridge at 6:10 AM
Begin New Jersey Garden State Parkway at 8:10 AM
Arrived Cape May ferry terminal at 12:10 PM
Odometer reading- 8742 miles
Departed ferry at
Departed ferry at Lewes, Delaware at 1:50 PM
Arrived Virginia Beach at 9:00 PM
Odometer reading- 8921 miles
Total miles- 387 miles



June 27

Odometer reading- 9037 miles
Departed Virginia Beach at 7:20 AM
Families present: Bidonde, Ziegler, Bruseau, Mahler
and Berkley
Arrived Lewes, Delaware ferry terminal at 12:30 PM
Odometer reading- 9207 miles
Leave Cape May, New Jersey at 2:30 PM
Arrived East Northport, New York at 8:35 PM
Odometer reading- 9414 miles

Total trip 880 miles: 387 miles going
116 miles during stay at meet
377 miles return (different route)



FACTS TO NOTE:

Bidonde's "A" averaged 17 mpg
Bruseau's "A" averaged over 18 mpg
Hawkins' Nissan 200SX averaged over 33 mpg
Harold Case's 1931 Deluxe Roaster had a valve head break off. It was pushed up by the piston and caused the cylinder head to crack. This happened on the return trip just after we crossed the Verrazano Narrows Bridge.



NOTE FROM THE Editor:

Bob, thanks for all your hard work in planning this trip.
Everyone that went had a memorable trip that will last a life time.

WE GET LETTERS

The following letter was received from the L.I. Regional Group of the Early Ford V-8 Club of America. The letter was addressed to Bob Bidonde.

Dear Bob,
Thanks to you and the Model A Ford Club of Long Island for inviting the Early Ford V-8 Club to attend Model A Day. All of our members had a really enjoyable time.

Thanks Again,
Rich Wagner
Editor
Plugs and Points



Stepping Out in Style: Distinguishing the Model “A” Era Lady’s Shoe Heel

By Lynda Davis, Dallas and Fort Worth Model A Clubs

For evening wear, Cuban heels were often affixed extravagantly with “rhinestones, mock tortoiseshell or cloisonné enamel” (Cox, *Vintage Shoes* 31) (see the above image of three rhinestone heels. The Cuban is at the left, and Louis heels are center and right). One distinguishing feature of the Cuban is that oftentimes the heel is a “knock-on,” which means “the sole leather does not continue down the [shoe’s] breast, but rather the heel is constructed completely, then attached, with no further crafting” (*American Duchess*).

The Military Heel:

The Military heel, “built upon the Cuban design” (*The Shoe Retailer*, 77), is almost a twin to the Cuban. With straight sides and back line, it doesn’t taper like the Cuban does. While it throws the foot a little forward, it is more supportive because the surface area at the cap is larger than the Cuban. For these reasons, it is a popular heel for women’s walking and sport shoes, cowboy boots, and children’s shoes. Initially, the Military heel was a low or short heel. The 1921 *Merchandise Manual for Shoe Departments* describes the heel as never exceeding the height of the Cuban. By the Model A era, however, catalogues and periodicals show Military heels mirroring the height of the Cuban.



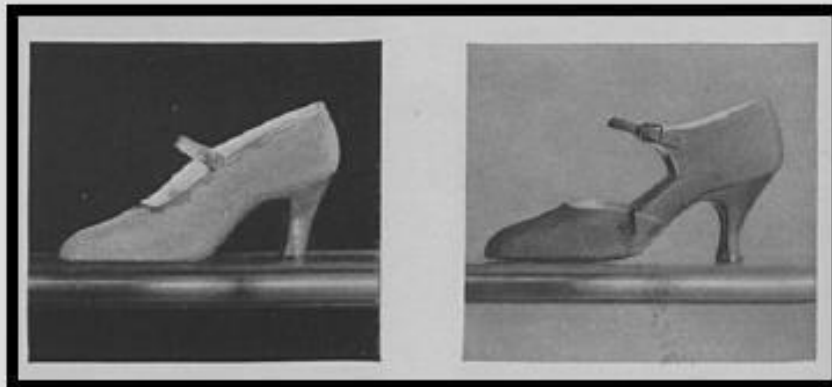
Louis Heel (Sometimes called the French Heel):

This article treats the Louis and French heels together as identical. In fact, the *Merchandise Manual for Shoe Departments* reports that “some shoe men say that the French and the Louis XV heels are practically the same.” The heel is named for King Louis XV of France; later, due to the inward curve at the heel’s waist and its resemblance to a thread spool, it achieved the nickname “the spooled heel.” By 1928, the hour-glass shape became less pronounced, more subtle and not as exaggerated as its earlier styles (see image below, a pair of Model A era Louis/French heels displayed at The Met in New York.) As a result, distinguishing between the Louis and the Cuban heels can be challenging. Often taller and thinner than the Cuban, this heel has a distinctive flirty curve, flaring out just above the heel cap. This style is popular with professional dancers, and era-image options are easily found in dance-shoe stores.



Spike Heel (Sometimes called the Spanish Heel):

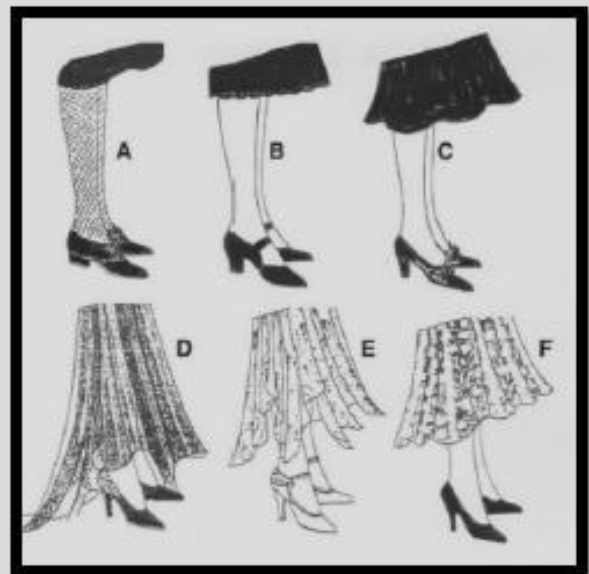
The Louis is sometimes confused with the Spike heel; however, the spike comes to a more narrowed and straight point at heel's cap. These heels are taller and thinner than the Cuban. They are straight-sided, tall, and tapering to a thin spike, from which it takes its name, and are typically constructed of "wood covered with textile or leather." The figure at right, taken from the Fall 1930 *Bellas* Catalog, is a nice illustration of a Spike heel. The figure below, taken from the February 1930 *Vogue*, visually juxtaposes the Spike with the Louis heel.



Coordinating the Dress Hem with the Heel Height:

The *MAFCA Fashion Guidelines* provides a variety of helpful descriptions with illustrations to help fashion enthusiasts put together a period-accurate ensemble, including matching the appropriate heel height with the major garment. As the diagram at the right shows, the longer the dress hem, the higher the heel. Still, these may not be appropriate for young teens.

With great sensitivity to a teen girl's desire to cross the threshold into womanhood, *Vogue* addresses this conundrum in their August 15, 1927, issue, which I thought appropriate to transcribe and post verbatim below. The writer here provides suggestions to mothers of fifteen-year-old girls who go "into a shoe shop with [their minds] firmly set upon spike heels." We can take comfort in that, in this respect, nothing has changed during the last century. To this end, *Vogue* proposes a "perfect medium" appropriate for the "sub-débutante":





"The very high spike heel is the worst possible taste for a girl of fifteen. On the other hand, there is some justice in a girl's contention that she need not wear flat heels that are appropriate for her nine-year-old sister. For sports and for school, of course, her heels should be very nearly flat, just as her mother's golf shoes are; for afternoon and evening, she may wear a Cuban heel, a rather low French heel, or a modified spike heel. None of these should be really high, but they may very well approximate the heels of the smart woman's walking shoe, which is cut high enough to give a graceful line to the foot and take away any suspicion of a 'babyish' look."

The illustration at left is provided by *Vogue* for their "sub-débutante" article.

Looking for more information?

Anyone wanting to dress in the vintage style can easily find help from *Facebook* groups like *Vintage Menswear* and our own group page: *Model A Era Fashions – MAFCA*. One may mine quite a bit of information and advice not only from *MAFCA Fashion Guidelines* but also from websites like *Vintage Dancer* and *Gentleman's Gazette* (both are hives of documented, research-based articles on fashions for both men and women and organized by decades). Even The Library of Congress has an era fashion blog, entitled "Women's Fashion History Through Newspapers." And members of *Genealogy.com* have access to 1928-1931 *Sears* catalogs. In fact, much of the information I collected for this article came from open resources found in *Google Books*.

Sources:

American Duchess: "What Kind of Heel Is That? A Quick Guide to Historical Shoe Heels" (Americanduchess.com); *MAFCA Fashion Guidelines*; *Merchandise Manual for Shoe Departments* by Elizabeth Dyer, January 1921; *Montgomery Ward & Co.*, Fall & Winter 1929-30; *M.W. Savage Co.* Minneapolis, Minn, Spring & Summer 1931; *National Bella Hess Co. Inc.*, New York City, 1928 and 1930; *The Shoe Retailer, Boots and Shoes Weekly*, July 20, 1904; *Vintage Shoes* by Caroline Cox, and *Vogue*, issues April 1, 1927, August 15, 1927, and February 15, 1930.

#####

2026 A GREAT YEAR FOR MARC

THE MARC NATIONAL TOUR

Join us in Beautiful
Finger Lakes NY!

MAY 2026

Hosted by the
Finger Lakes Region
of MARC



For more information contact Meet Chairman Paul Gunninger pjgunninger@gmail.com 814-952-5391

THE 2026 MARC NATIONAL MEET THE MAGNIFICENCE OF FRENCH LICK "HISTORIC HOOSIER HOSPITALITY"



HOSTED BY HOOSIER HILLS MODEL A CLUB & COLUMBUS INDIANA MODEL A CLUB

REGISTER TODAY BY CALLING THE HOTEL AT 844-241-6361 GIVE CODE: 0726MAR

FOR MORE INFORMATION CONTACT MEET CHAIRMAN REX HINKLE 812-360-3336 OR REX.HINKLE@COOKGROUP.COM



2025 MAFCA National Awards Banquet



**Celebrate in
Mobile, Alabama
December 3-6, 2025**

**Renaissance Riverview
Plaza Hotel**

**Book your room
and register at
gulfcoastmodelclub.net**

**In Mobile, we will celebrate our
2025 National Award Winners
and meet the
2026 Board of Directors**

- Enjoy seminars
- Tour the Magic Christmas in Lights
- Experience Mobile's rich 300 year history
- Visit the USS Alabama and enjoy lunch under the planes
- Explore Mobile's history by trolley



Seminars

- Fashion with *Sherry Winkinhofer*
- Mechanics with *Paul Shinn*
- Secret History of Mobile with *Todd Duren*
- History of Alabama Roadways with *Dr. Martin Olliff*

Bus Tours

- 29th Annual Magic Christmas in Lights at Historical Bellingrath Gardens
- USS Alabama Battleship Memorial Park
- Mobile History Trolley Tour

Walking Tour

- Secret History Tour - Speakeasy's



Model A's Looking For A New Home

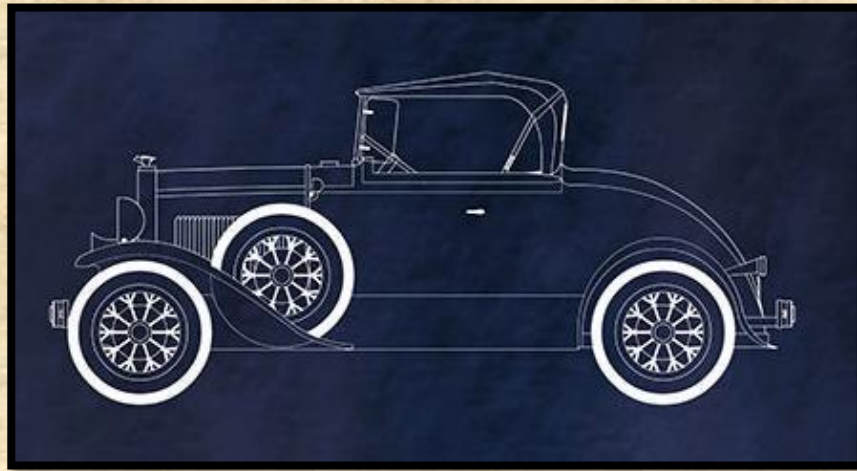
1929 Model A Special Coupe



Price \$19,290

This 1929 Business Coupe was owned by beloved fellow club member Don Ogurick also known as "Doc Don" among Model A enthusiasts. Don suddenly left us but his memory will live on. His 1929 Model A Coupe needs a new home where it can be cared for and cherished. If you are interested in owning this beautiful vehicle, Contact Angela Ogurick(516) 263-4489

For Sale – 1931 Ford Model A Deluxe Roadster– \$17,500



Dependable, well-sorted Deluxe Roadster with extensive recent mechanical work. Top end just overhauled with new SS valves, guides, springs & keepers. Engine previously rebuilt with 5.5:1 high-compression head, hardened valve seats, insert bearings & "B" cam. Rebuilt distributor, carburetor, and water pump. New radiator hoses, front/rear engine mounts, pulley & belt. Equipped with sport spotlight, radiator grille guard, dual side-mount spares, and rear trunk/carrier. Older paint, but solid and runs great. Space forces sale.

\$17,500. Call Bob Cassara – (917) 882-5893.

Model A's Looking For A New Home

1931 MODEL A TUDOR SEDAN



For Sale is a beautiful '31 Tudor Sedan. It has a straight body and fenders. Never any rust. The body color is original Paint, a dark green. The pin stripe is original. The roof is in excellent condition. It has a rebuilt engine. The fenders are perfect.

The car needs a wash and wax.

The upholstery is in worn condition. The seats need new covers.

The car is on Long Island.

See attached photos.

Asking \$10,000.00

For more info contact Wayne Duprez
631-265-2597

1929 MODEL A PICK-UP



This good-looking pick-up truck was owned by fellow club member John Graystone who unexpectedly passed away. John's son Matt is looking to sell this vehicle. It is an original restored Model A with a custom (well made) bed. The truck runs and looks good; it just needs a little TLC to bring it back to its original glory. If you are looking for a Model A Pick-Up this is a must-see vehicle. The price includes many extra quality parts.

Contact: Matt Graystone

(516) 557-9007

PRICE: \$18,000

MISCELLANEOUS ITEMS FOR SALE

Pre-Estate ESTATE SALE – having turned 80 this year and stopped shopping, I'm now on line for the check-out counter. As I get closer to the head of the line, I want to unload some of the stuff in my shopping cart. Get the following while you can at my asking price or YOUR BEST OFFER (This stuff must move before it's too late). If you wait until after I check-out, this stuff may not be available, or you may have checked out before me 😊

Jack Stands: (brand new/ never used)

Huskey (two new in box) 3 tons , \$25

Duralast (two new in box) 2 tons, two boxes, \$20 each or 2 for \$30

Hydraulic Floor Jacks: (brand new/never used)

1 No Brand Name (Made in China - “Tariff Free”) 3 ton, \$45

1 Craftsman 2.25 ton, in carrying case, \$50

Model A Publications:

How to Restore Your Model A, Vol 1,2, 3, 4 (set) \$10

Technically Speaking, Vol 1,2, 3 (set) \$10

Floyd Clymer's Model A Restorer Handbook, \$10

Ford Dealer & Service Field, Jan – Apr '28 (Reprint) \$10

Model A Exhaust/Intake Manifold (used but good), \$50

Model A Radiator Stone Guard, \$200

Model A Front Splash Shield (28/29), \$50

Model A Engine Pans ('28 beat-up w/some weld) set, \$20

Model A Horns:

1 Non-Sparton, Ready to Mount/use, \$250

1 Sparton Horn, all parts ready for re-assembling, \$300

Model A Generators:

1 L-1 (Terminal in front, '29/30) w/cut-out, \$200

1 L-2 (Terminal in rear, '30/EoP) w/cut-out, \$200

1 L-2 (Rebuilt) w/cut-out, \$200

2 Rebuildable or use as core (in purchase new), \$50 each or 2 for \$60

Model A Starter Motor (rebuildable or use as core), \$20

Other: 1 Reciprocating Electric Saw, (hardly used) in carrying case, with blades, \$50

Contact: Tom Lopez, H: 718-672-2369; C:718-772-5581; On-line:

Tlopez1945@aol.com

FOR SALE

Cars and Miscellaneous Parts

FOR SALE: 6 Volt Sparton Horn By A&L.

This Horn Is Brand New Price: \$275

For Sale: New Hot Water Heater Kit for Model "A" Ford. Complete kit contains heat exchanger, all plumbing parts & instructions to put heat in your Model "A." \$150.

Contact : Bob Bidonde

E-Mail: modela1931@aol.com or (631) 471-9551

AKA Grandpa Bob

***God, please bless the USA
and long live The Republic***



Charlie Tinnin
Model A Ford Mechanic
631-208-6598
2955 Depot Lane
Cutchogue, NY 11935
Charliedesign@aol.com

Janet Tinnin
631-208-6725

BOBBY BEE AUTOMOTIVE

380-B Central Ave Bohemia, NY 11716
(631) 256-0030



Bob Bader

baderbro@aol.com

Tuesday – Friday 10 AM to 6 PM
Saturday 9AM to 2PM

Parts, Rebuilding, Repairing and Shop Service

Full Line of Reproduction Model A Parts.

Large Inventory of Used Original Model A Ford Parts.

In-House Rebuilding of all Chassis and Mechanical Components.

Troubleshooting, Tune-Ups , Wiring and Fuel Systems.

Complete Brake System Services.

Engine Removal and Installation Services.

Daily UPS Shipping Available

We Accept Visa, Mastercard and Discover Cards

Serving The Model A Ford Hobby For 40 Years