



NORTH ISLAND MODEL A FORD CLUB INC NEW ZEALAND

Model A Torque

January 2026

Issue No: 2026/01

Chapter Members of



Presents galore at Club Christmas Party Cornwall Park

Welcome to the North Island Model A Ford Club Inc.

The purpose of our club is to enjoy, restore, preserve and protect the Model A Ford automobile and to foster a spirit of good fellowship and family participation through the use of the Model A Ford.

Membership is open to anyone with a sincere interest in the Model A Ford. Ownership is not a prerequisite.

Website: www.modelafordclub.co.nz



JANUARY 2026

Sat 17th

Kumeu Classic Car & Hot Rod Show. Full details view Page 4.

Wed 21st

Mangere Beach BBQ 5pm onwards Mangere Beach Reserve. This has been a very popular get-together as it seems to kick off the New Year and allows us to relax a little after all that Christmas hype. Details page 5.

Sat 24th

Wings n Wheels Thames. 10am – 3pm at Sir Keith Park Memorial Airfield. Page 5.

FEBRUARY

Sun 8th

Ellerslie Car Show and Intermarque Concours D'Elegance. 10am – 4pm at the Ellerslie Racecourse organised by the Auckland Mustang Owners Club. Page 14.

Sun 22nd

Kumeu Model A Run – Meet Massey Domain for beginning of run. Details Pg 14

NON-CLUB EVENTS – These may be of interest to some members

17-18th Jan 2026

Petal to Metal Classic Car Show, Waiuku plus Fushia's in the Park

7th Feb 2026

East Coast Rally VCC event

28 Feb – 1st Mar 2026

Highland Fling Te Awamutu, Waikato

15-21st Mar

Vero International Festival of Historic Motoring Nelson – VCC event

25th – 29th Mar

Whangamata Beach Hop

18th April

Warbirds at Ardmore

30 – 31st May

Irishman's Rally, Fairlie, Canterbury

**Print this page off for reminders and stick to
your fridge!**

Do not forget to visit the Club Website, click on the Events Calendar. If you are unable to use the website and have questions a committee member would be only too willing to assist. Give them a call!!

Committee Report



This is a busy time of the year for everyone however the wheels keep turning as events still need to be planned. The committee has worked hard bringing together information to keep club members up-to-date over this Christmas break. Our Christmas party at Cornwall Park was a huge success and enjoyed by many. The committee will not meet again now until early February. Martin will be home from his well-earned break and I am sure he will have something planned. The Committee wish all our members a very Happy New Year and look forward to seeing you at the many events marked on the calendar. Be safe on the roads and drive your Model A with pride. A lot of people out there love to see us on the road, and for some it makes their day. Relax and enjoy with your family and friends.

HAPPY NEW YEAR



Editor's Comment



Happy New Year to all our Model A friends

While reflecting on 2025 I realised that I had spent much of my year living day-to-day with the many challenges it brought for me personally. Now, with taking on the position of Editor I need to live my life looking 2-3 months ahead. Bringing in the New Year I ponder this thought of living in the future and realise I cannot do this alone. I need to bring everyone else with me because if you need to know what events are planned then I need to know early. I put it out there if you have any EVENTS or NEWS, big or small then let me know so I can share it with other members. Comments and feedback are also important as I need to know that you are happy with what you are reading or if changes should be made. Any news for publication must be received by the **20th of the month**. If you are unable to make this deadline please call me to discuss as I do need to be aware of this.

David and I wish you all a Happy New Year for 2026 where many more memories will be made.

Karen Thomas, Editor

KUMEU CLASSIC CAR AND HOT ROD FESTIVAL – 16 – 18 January 2026



The National Kumeu classic car show is running again 16-18 January. The Club will have their marquee erected on **Saturday 17 January only** within a roped off area. This site will accommodate a display of approx. 15 vehicles so come on along and show off your A. This will be the same as the previous 2 years. Entry will be from the Waitakere Road entry gate. We will have a Weber BBQ available to cook those sausages and savour the aroma.

Bring with you a few sausages to cook up, a chair and anything else you need for lunch and make yourself comfortable. Alternatively, there are plenty of food stalls available with loads of variety. If you have not been to the Kumeu Show before make sure you pay a visit this time as you will be amazed at what you see. If you have a Model A for sale this is the place to do that.

To assist us with the organisation of this event it would be appreciated if you could contact Terry Costello 0274 920 642 to register your interest or to answer questions you may have. Looking forward to seeing you there.

Vintage market stalls add to the atmosphere creating a weekend of excitement, nostalgia and a lot of motorheads keen to show off their pride and joy. A car enthusiasts dream.



COME ALONG JOIN IN AND ENJOY THE DAY

MANGERE BEACH BBQ – Wednesday 21 January 2026 - 5.00pm onwards

Come along and join fellow club members at the Mangere Beach BBQ. This annual event is now being held at Mangere Beach, which is more sheltered from the prevailing SW winds, on the southern side of the Onehunga Harbour (not Onehunga Beach). This area does have easy motorway access.

The Club traditionally has always had a very good turnout at this event so come along and join us – share your Christmas stories or your New Year wishes. Please bring your own picnic dinner plus choice of sausages/steak to cook on Club BBQ. Also supply your own drinks, folding chair, table, cutlery and drinking vessel and soak up the atmosphere of a summer evening in the fresh air.

Where: Mangere Beach peninsula that has the Mangere Beach Boating Club building and the Mangere Beach boat launching ramp Kiwi Esplanade Road. Lots of sealed parking, trees and picnic tables set in a grassy reserve. For further information contact Andrew Costello 021 943 063 or view the club website for detailed driving instructions.



WINGS & WHEELS – THAMES – Saturday 24 January Sir Keith Park Memorial Airfield, Thames 10.00am – 3.00pm



This event is being held at the newly named Sir Keith Park Memorial Airfield, 395 State Highway 25, Thames. It is a very relaxing day full of entertainment with food stalls and many displays of vintage vehicles, classic trucks, tractors, FMZ bikes, military vehicles, aircraft and classic cars. There will be an all-day vehicle display and an airshow from 12pm. This will include Warbirds, Yak aerobatic team and solo aerobatic display.

In the past this event has been well attended by club members. We will be meeting in the Kopu Hotel carpark and departing sharp at 9.00am as a group. The gates will be closing for all display vehicles at 9.30am. \$10 per vehicle no charge for passengers. Don't miss out on the fun it is a great place to take the grandchildren. Remember your chairs, sunhats, sunglasses and sunscreen. If you have any questions regarding this day please contact Terry Costello to discuss.





CELEBRATING 50 YEARS CLUB MEMBERSHIP

North Island Model A Ford Club Inc

Murray and Anne ASHBY

1975 - 2025

At our recent AGM Murray and Anne Ashby were awarded their 50-year membership of the North Island Model A Ford Club, along with John and Mary Castle. I think you will agree Murray certainly has given us a detailed story, along with many photos. Some of our fellow club members would be totally unaware of Murray and Anne's commitment and years of dedicated service to our Club. Sit back, relax and enjoy their story.

My Life with Model A Fords through to November 2025

With apologies to Michael Holliday who in 1959 sang "Someday I'm going to write, the story of my life" a love melody, here is an article on one of my passions, I guess another love story, too!

While at high school in Feilding, the parents of a friend had a Model A Tudor intended to be their second car. It never achieved legal status, but we often tinkered with and drove it on the reserve adjacent to their property. So began my consuming interest.

Soon after leaving school, in 1965 I bought a 1930 Model A Town Sedan. In this I explored much of the lower North Island. On one occasion after failing to stop for the traffic lights at the bottom of Ngauranga Gorge, new brake linings were bought, ex stock from the local Feilding Ford Dealer. However, on the advice of my wood-working father, who proposed that there would be problems with the wooden frame construction, I sold the car in March 1966. It was replaced with a 1955 100E Ford Prefect.



1928 Phaeton & 1929 Tudor

After moving to work in Upper Hutt, I had a 1935 Hudson Terraplane in early 1968, but not another Model A until December 1968 when my friend Ashley and I bought a 1928 Roadster. This was soon followed by a couple of 1928 Phaetons; one of which we towed home with the other from Carterton, over the Remutaka's.

The Roadster had a top, but neither Phaeton did. In these we travelled the lower North Island, often to Taupo with a trailer, camping for the Christmas holidays.

A notable experience was the early Phaeton running out of a clutch in Taupo on one New Year's Eve. We were able to tow the car to Horopito for Bill Cole to install another multi-disc clutch. This achieved, the drive through the "Paraparas" to Wanganui and then home was a pleasure. (This car we sold in 1972 and was recently for sale in Masterton!)

We explored off-road the forest fire breaks, the old "Fell" engine incline of the lower Remutaka's, and one time I was not too popular driving a steep walking track until I rescued a trumper with a broken ankle, and all was forgiven. On one jaunt down a steepish fire break on wet grass, with brakes full on, the car kept sliding nearly to the edge of a cliff. Pardon the pun, but an abrupt learning curve!

It was during this period when repair to one car was necessary, the result while functional was not authentic. I think this began my resolve to gain skills for my own correct repairs.

I was fortunate to have a good friend Tony who was a “Ministry of Works” trained motor mechanic, from whom I learned a lot. He also showed me how to make a valve guide removal tool.

The Dark Green Roadster, often referred to as “your Black car”, was my transport around Upper Hutt for some time as well. (This is the reason that many of my cars are now painted bright non-ambiguous colours!) The engine in this Roadster was prone to breaking valve seats. Fortunately, the husband of a lady with whom I worked with was an engine reconditioner. The car was towed as required to fit the seat cutting machine, except when seat number eight failed, as it was too close to the firewall for machine access. I still have that engine! (It was in our Phaeton, too, until valve seats began dislodging, again.) This Roadster and the two Phaetons left us by 1973.



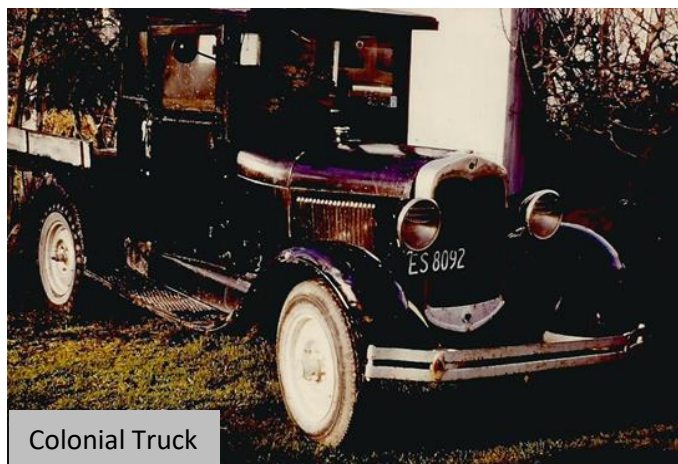
1928 Colonial and 1930 Pickup



1928 Colonial Pickup

After Anne became full-time navigator in 1973, we bought a rather tired 1929 Tudor, in which we did many miles over the next two years. One Christmas we toured up the East Coast, camping on riverbeds; wouldn't do that now! My German Shepherd dog, which had been with me longer than had Anne, frequently contested the seating arrangements in the Tudor. We also had a 1928 Colonial Pickup, and a “trucked” 1930 Sedan as a flatbed Pickup. (The Tudor was sold in 1975 to a gentleman who at the Masterton National Meet in February recognised my nametag and reminded me of his purchase.)

Frosts were common in Upper Hutt and the Pickup lived outside. One morning taking Anne to catch the train we arrived with radiator steaming at the Wallaceville rail station, much to the amusement of other passengers. I guess the water had frozen. It was all right for me, I continued on to work incognito, but Anne had to catch the same train as all the intrigued spectators! While visiting a lady with whom Anne worked, the daughter asked her mother if we were very poor, like “The Waltons” on TV.



Colonial Truck



1930 Roadster

Until now most of the Model As had been very tired and worn and, my brother-in-law was on the committee of the VCC suggested we restore a car. Anne was all in favour of this, so much of what follows can be credited to her!

I thought a Roadster Pickup would fit the bill, top down and plenty of room for gear and the dog, but on realising that the configuration was not really convertible, and as we desired authenticity, the search began for a 1930 Roadster. From searching all over NZ in 1975 we found two! One came from Silverdale, the other from Rolleston; the latter was essentially a car and a half from which the owner had intended to build one. In our care the half became the desired Roadster Pickup (but, by then the dog was too old to jump onto the tray). The other was dismantled and stored until 2018 when after much deliberation, it was sold. After extensive use as daily transport, the Roadster Pickup went in 1984.



Two 1930 Roadsters and Pickup

During the negotiation for the Roadster from Silverdale, we stayed in Titirangi with Anne's Aunt. Her son, a Policeman, mentioned that a group interested in the Model A, would meet us at the Henderson Police Station. Hence, we met Mike Watkins who also owned a 1930 Roadster, and we joined the North Island Model A Ford Club. We had visits in Upper Hutt from Paul Smith, as well as Ross Ward, the then Club Captain. This Roadster, first registered in December 1930, had 24 previous owners, some of whom made questionable repairs. I set about doing the research to ensure my rebuilding was proper. After initially just getting it drivable, I was able to borrow original bits to copy.



Yellow Pickup



1930 Open Pickup

Around 1976 we bought a trailer load of three 1928-29 Roadster Pickup parts. Some of these were later refurbished or sold as projects, but there are some parts still with us!

In 1977 we transferred to Hamilton, and through the Model A Club met Harold Fleming of Ngaruawahia Panel Works. He became a very good friend, whom I gained knowledge (and wisdom). Harold and Nancy immigrated to Canada in 1979, and we inherited the Yellow Closed Cab Pickup.

I had by now enrolled in a VCC sponsored restoration class at Polytech and learned more panel repair skills. Using these facilities, I restored our 1928 Phaeton. This car had been launching boats in the sea and demanded serious attention. It was first registered on the 15th of November 1928 in Waipawa, Central Hawkes Bay. Ironically this was the town in which I was born, and this date is my birthday!

We had the body media blasted in February 1980, completed the necessary renovation during the year to gain WOF on Christmas Eve. In January-February 1981 with other members of the Model A Club we undertook a six-week tour of the South Island. As we drove into Greymouth, we unexpectedly joined the parade to celebrate the 10th anniversary of "Shantytown". We were allotted parking within the museum grounds, too.

For a project the Model A Club built a nine-seater Bus on an AA chassis. Nine seats, as a regular car license is all one needs to drive this configuration. We had the use of this quite often, as well. In 1988 we featured in the Birkenhead Christmas Parade, along with our Phaeton. This left the Club, and was in Napier for a time, serving the "Art Deco" theme.



Nine seater bus

At Polytech I continued with other projects. We had gathered some running gear and body panels, intended for a "Woody Wagon". However, in 1991 a small group of us (Sean, Daggy, Gavin, Dave, Glenn, Owen and Malcolm) used these parts to build our own Wooden Waikato "Bus" in three weeks. This was sponsored to take patrons to and from the carpark of the "Waikato Home and Garden Show" over Labour Weekend. The (Tram) counter recorded that we took some 4,500 people over the four days. The "Bus" was retired in 2016 but is currently getting a new life as an authentic Wooden Station Wagon.



Bus Planning



Bus and passengers

For a number of years, we celebrated "Henry's Birthday" (also known as Henry Ford Memorial Day) at Claudelands Showgrounds, Hamilton. I recall one lady saying to me ""and how old will Henry be this year?"

The displays we presented ranged from a car yard of the 1930s complete with picket fence and chickens roasting over a Model A driven spit. The Pickup was jacked up off the ground with the rear wheel turning the meat over an open fire! One year when the wooden "Turkey" "caught fire" it was extinguished using a 1938 Ford V8 Fire Engine. As well, the Yellow Pickup or Green Pickup powered a number of sheep or pig spit roasts for auspicious occasions.

Continuing from a work-related trip to Seattle in the USA in 1991, we took a couple of weeks to explore the western coast. While in Eureka, California, we met the owner of Harper's Ford Dealership, established by the owner's grandfather who brought Model Ts to the district. He had a collection of Model As and offered us one to drive through the carved tunnel of a giant redwood tree in the "Avenue of the Giants".



Our daughters grew up believing that everyone has a basement full of old cars! They both learned to drive in Model As, mainly the Yellow Pickup, and indeed Elizabeth went for her driver's licence test in the Roadster. Unfortunately, the starter motor jammed (a very rare occurrence) and as she had not had adequate tuition on how to free it, she needed to book another test!

Around 1999 we repaired a 1930 Phaeton, which had been (questionably) restored in 1980. For the VCC Rally 2000, it was loaned to an English couple whose Bugatti suffered from a broken crankshaft. In spite of the culture shock, they were most gracious. Sarah had a connection with this Phaeton.

Polytech introduced the user pays approach and out priced itself, so with Reece (as Headmaster) and Alan we set up "Playschool" evenings where we met at Reece's workshop. We have fabricated many interesting parts, and in 2017 assembled a 1911 Torpedo Body Model T which is currently on display in the Katherine Mansfield section of the Hamilton Gardens. Neither Reece nor Alan has a Model A. For the opening of this section of the Gardens, I bought an authentic Top Hat, which cost more than my first Model A!



WATCH OUT for the continuing story of Murray and Anne Ashby's "Life with Model As" in the February Newsletter.

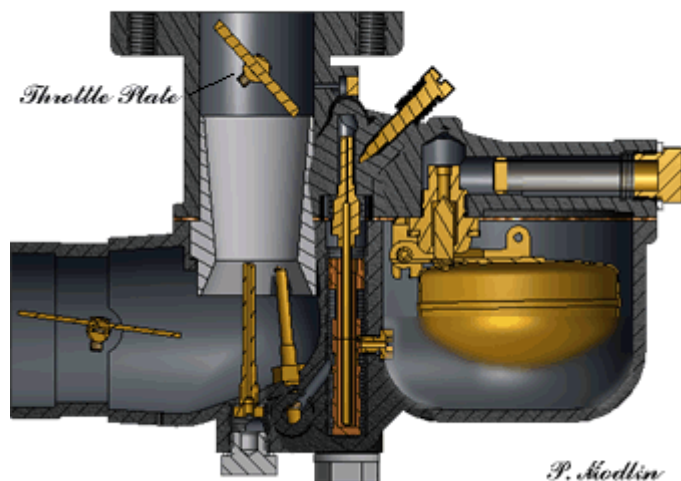


CARBURETOR BASICS

By Paul Modlin

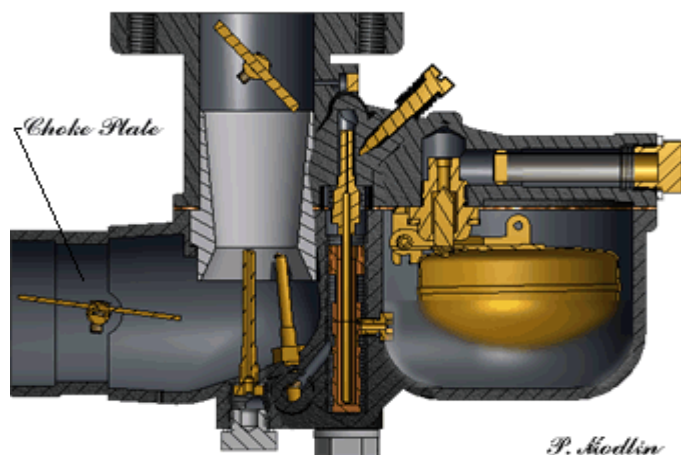
Suction created by the pumping of the pistons, causes fuel and air to flow through the carburetor into the engine. Each alternate downward stroke draws in a fresh charge of mixed fuel and air.

Throttle Plate



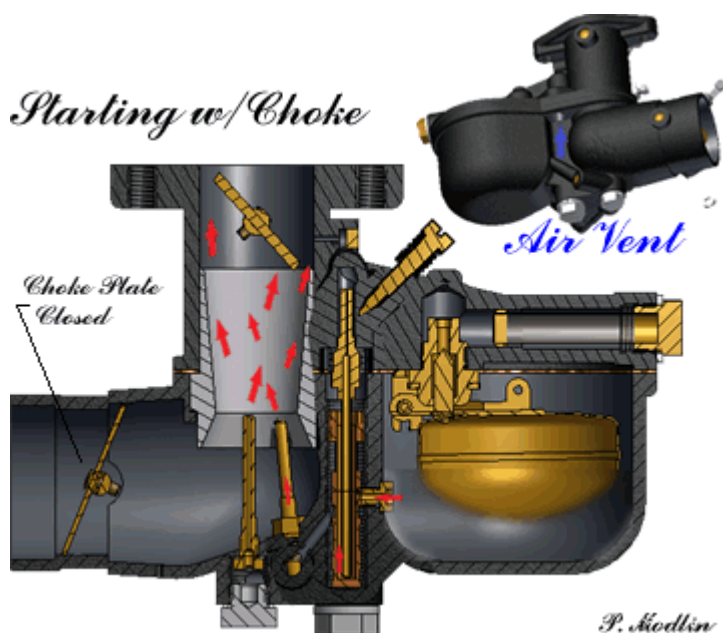
The throttle plate manages the amount of air flow that is delivered to the engine and is controlled by the "Throttle Lever" and "Accelerator" inside the cab.

Choke Plate



Pulling on the Carburetor Adjustment Knob, often called the GAV (Gas Air Valve) inside the cab opens and closes the Choke Plate. Turning the GAV enriches or leans the fuel mixture flowing through the "Cap Jet".

Starting w/Choke

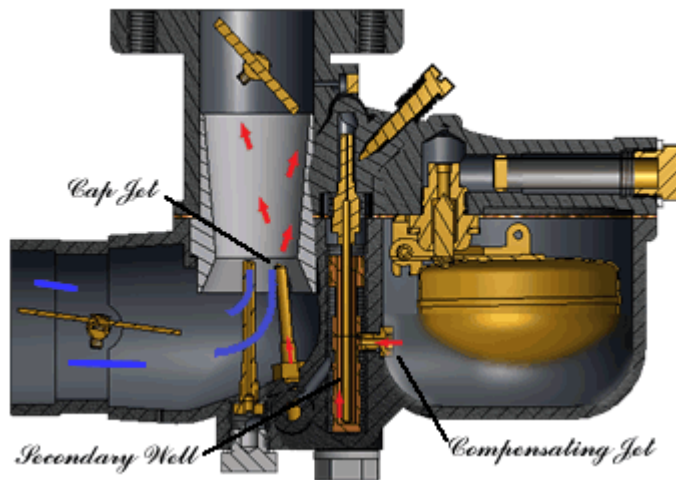


When the engine is started with the choke closed a greater vacuum is formed, pulling in a larger amount of fuel.

Running

Low Speed

P. Modlin

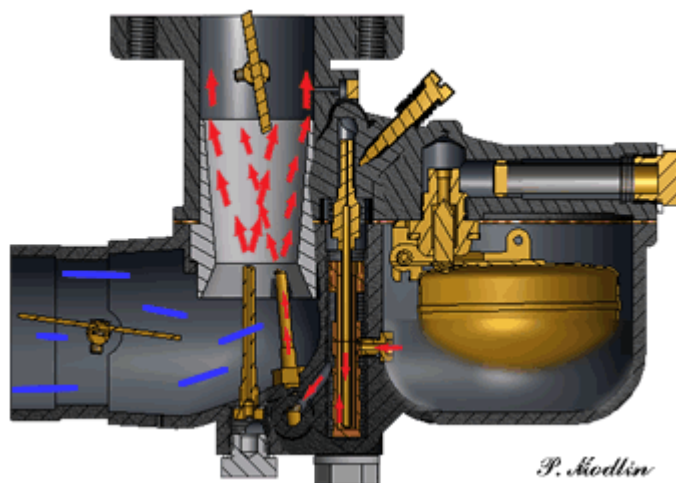


The "Compensating Jet" is inside the fuel bowl and empties into the "Secondary Well" which is open to the air. The "Cap Jet" connects with the "Secondary Well". The "Cap Jet" can only draw as much fuel as the "Compensating Jet" will allow, regardless of the amount of suction.

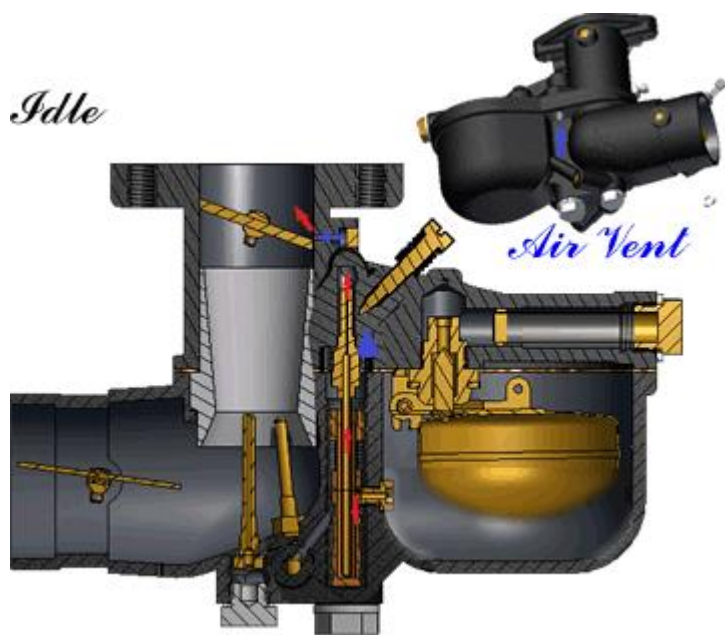


The "Cap Jet" has an additional fuel supply from the "Fuel Bowl". The flow rate of the fuel to the "Cap Jet" is controlled inside the cab with the "GAV" adjustment knob. Turning it left (towards the driver) enriches the fuel mixture for the "Cap Jet". The "Cap Jet" is used at low speeds.

High Speed

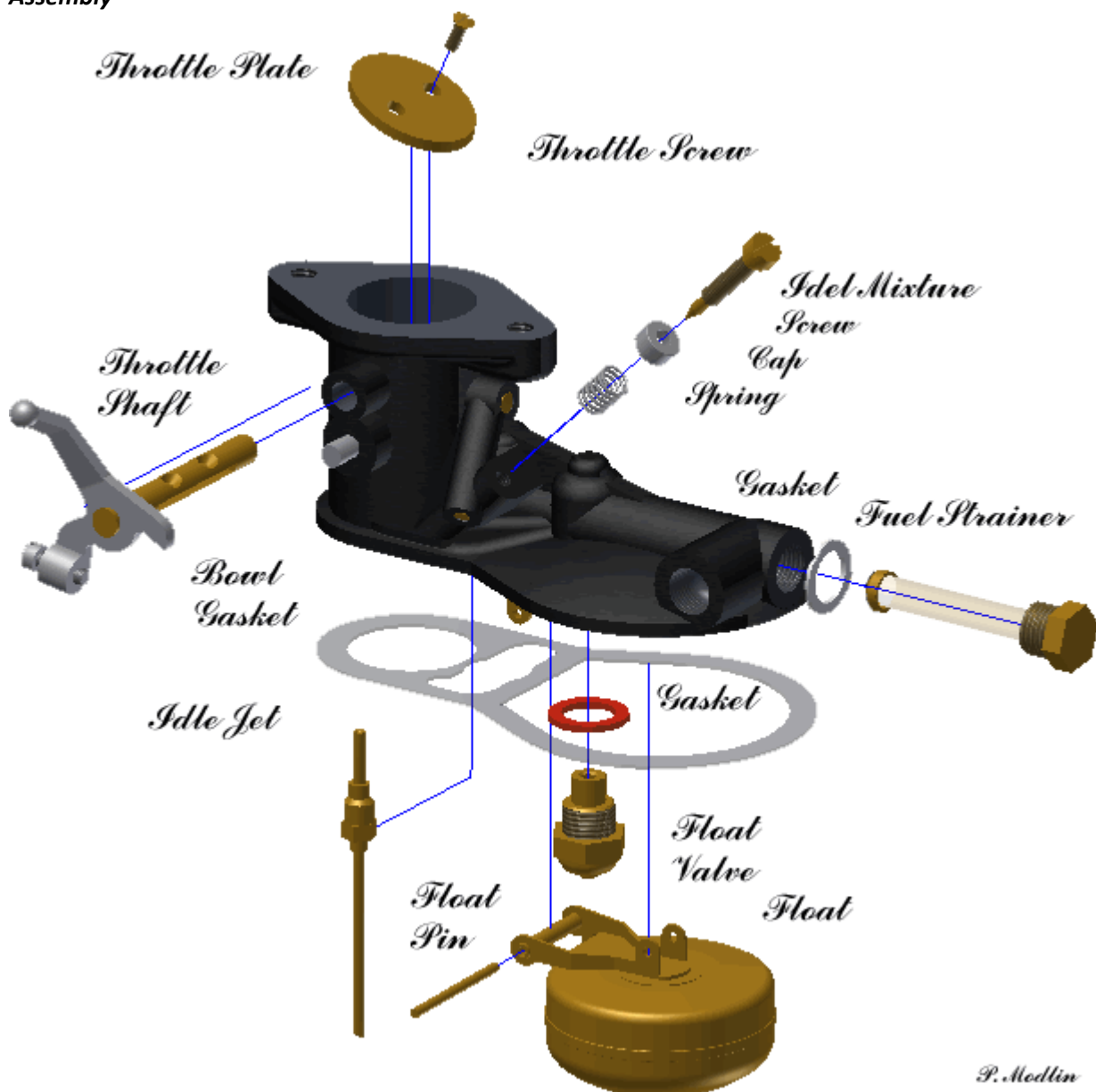


The "Main Jet" is connected directly to the "Fuel Bowl". It acts like a straw; the stronger the suction the greater amount of fuel will be supplied. The "Main Jet" kicks in and helps out the "Cap Jet" at higher speeds. When cruising, the "Cap Jet" can be leaned out (turn right) to conserve on fuel.



Idling occurs when the "Throttle Plate" is partially open. A vacuum above the plate is created, drawing air through a small hole, which pulls the gas from the secondary well through the "Idle Jet".

Assembly



P. Modlin

ELLERSLIE CAR SHOW – Icons of the Screen Club Theme – “Bonnie & Clyde”

Sunday 08 February 2026 – 10.00am – 4.00pm



The Ellerslie Car Show has become a highlight in every car lovers calendar. This year will be no different. Enjoy the country's biggest line up of cars – many of them regarded amongst the world's best restorations. Meander in the sun and view the vast selection of vintage, classic and modern vehicles on display.



This year the organisers of the Ellerslie Car Show are asking clubs to participate in a theme. The clubs compete for the title of 'Best Car Display' – “Icons of the Screen”. The NIMAFc has accepted this and have been asked to create the theme of “Bonnie and Clyde”. Let's give it a go and see what we can do for the Club. I believe Bonnie and Clyde illustrated the complexities of their outlaw lifestyle and the consequences of their choices – this leaves us with a vast choice of props so if anyone is interested in participating in this give me a call. The more the merrier.

Put a ring around the date and support your Club. Bring your chairs and be part of our created scene.

KUMEU MODEL A RUN – Sunday 22 February 2026 – Mark Corbett



This run is still being worked on with more details available in the February newsletter.

We will be meeting at the Massey Domain - 11 Red Hills Road. The first section of the run will be about 40km then we will regroup for morning tea. The second section will be about 22km where we will finish at a café for lunch.

I am sure Mark will be putting together an exciting run to suit everyone so put a ring around the date.

PASSING LANE

It is with sadness I inform members of the passing of Club Member Les Forward on 29 November 2025. We pass our condolences and respect to Thelma and the family on their sad loss. Rest in Peace.



TECH NIGHT AT HOME OF PAUL SMITH & VICKI THOMSON – Wednesday 3 December

Club members Paul & Vicki, hosted a well-worthwhile Tech Night at their home in Waiuku, on Wednesday 3 December.

Paul, Life Member (NIMAFc member since 1976), Club Historian and knowledge bank of all things Model A, has an impressive collection of Ford Model A's and related memorabilia. To my knowledge, this includes – but is by no means limited to – a 1928 Ford Tractor, 1930 Roadster Pickup, 1930 Town Sedan, 1930 AA Truck, 1930 Deluxe Delivery, 1930 Coupe, 1938 Sears Economy Model A-powered Tractor, also a welder and a sprayer both powered by Model A engines.

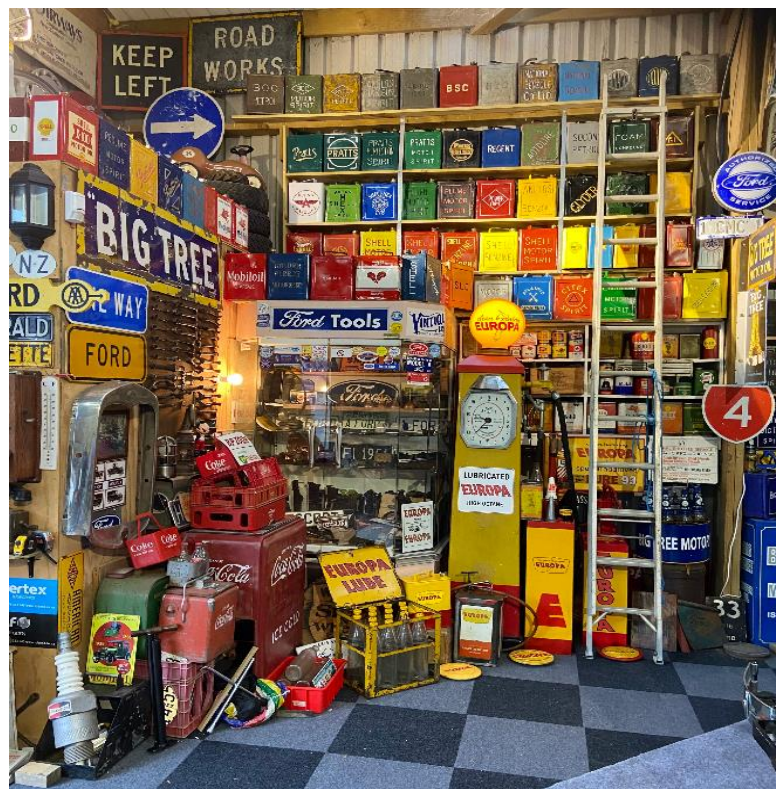
Paul's sheds are crammed full of interesting exhibits, a lifetime collection. Many things caught my eye, so I'll let the photos do the talking. However, an item worthy of special mention was a 1961 800 Series Ford Powermaster Tractor. It looked like it had just departed the factory, albeit 64 years ago. 4-cylinder, ohv diesel engine, 2820cc. 12 forward & 3 reverse gears. Max. road speed, 14mph.

The evening finished in Vicki & Paul's home with a delish selection of Christmassy food. BTW, look for the photo of Paul holding his curious electric hammer. Now there's an idea.

Thank you Paul, thank you Vicki, for welcoming us into your home and sheds. All those who turned up voted it a top visit. Oh, and did I mention Vicki's Elephantarium – a dedicated space full of every elephanty item you could imagine. Elephants rule here.

Ralph Levinson





CHRISTMAS IN THE PARK – Sunday 7 December 2025

Cornwall Park has become our annual go-to place for the final Club event of the year. From memory, this was the 11th year of erecting our Club gazebo, adjacent to the popular cherry trees. In the absence of Club rooms, our big sheltering gazebo has been a real asset. This year, with the addition of several sun umbrellas and Trevor & Carol's gazebo, we enjoyed plenty of shade on a perfect, golden weather day.

We had a great turn out of 20 Ford Model A's; once again, they were the prime attraction in the Park. Fetchingly lined up, "dressed" Christmassy style ... every Park visitor seemed to want to take souvenir photos. Our Model A's ruled the day.

Santa arrived at the appointed time of midday. With the help of assistant elves, the 61 people present were each given a Christmas gift from Santa. And thanks to Jenny's efforts as Chief Gift Organiser & Wrapper-Upper, the wrappings denoted a lady's or man's gift.

Children also received a gift from the jovial old boy in red.

The printed 33-question Mastermind Quiz kept everyone focused, encouraged by good prizes on offer. Questions were gathered during the year and despite being multi-choice (4 options), some were cunningly deceptive. Eg, "Noisome" actually means smelly, rather than noisy. You will have to forgive me for not remembering the winners. They were very smart and a little lucky. Congratulations NIMAFc Masterminds.

Prizes were also handed out to the most Christmassy dressed lady & man. Winners were Ollie Thompson and Stephen Upson. Stephen by the way, celebrated his achieving Gold Card status on the day. A beautifully decorated, Model A-themed fruitcake had been baked by his mother-in-law and shared with Club members present. Welcome to the Senior Citz brigade Stephen. Prizes were also awarded for the best decorated cars. Winners were Jan & Jim Corbett, Joss & Terry Costello, Carol & Trevor Farr, Anne-Marie & Hugh Hulse.

An imaginative touch this year was Club Editor Karen's Christmas photo frame. You just stepped "into the picture", for a perfect spirit of Christmas framed photo.

The summery weather and mild breeze across the Park, encouraged a sort of soporific drowsiness in the afternoon and everyone seemed content to stay put and chat with fellow Model A'ers. At one point I glanced around and saw a winning vignette, which I can't resist sharing. Three male stalwarts of our Club were sitting in a circle, bent forward in conversation ... each had a different-coloured lollypop in his mouth! Happy were they. Happy day it was.

Ralph Levinson





CLASSIFIED ADVERTISEMENTS



There is no charge for members advertising in this newsletter. Items will be advertised 3 times unless renewed or cancelled with the Editor.

1928 Model A Phaeton for sale \$30,000 or near offer. For further details please contact Ray Kerley directly on 0274 930 299.



1929 Pickup excellent condition \$38,000. Ph Terry Costello 0274920642 or email tcmodelanz@gmail.com

WANTED - pair shock absorbers in good condition for 1930 Model A. Please call 022 432 9823 Graham Thompson.

Veteran AND Vintage
Spares and Repairs Ltd
RESTORATION SUPPLIES
TYRES & BODY PANELS
Specialist | Model T & Model A 1907-1931
16" Tyres black and white wall
Errol & Linda McAlpine
P 09 832 9818 | M 0274 543 983
E vet.vin@xtra.co.nz www.veteranvintagecars.co.nz
1127 Scenic Drive, Swanson, Waitakere, Auckland

WHITEWALL TYRE CLEANER

- Effortless spray on and wipe off
- Restores Whitewall tyres
- Non abrasive
- Eco-friendly
- Available in quart or litre sizes

GMS HOT RODS
STANCE | STYLE | QUALITY

CONTACT: Greg Stokes ph 021 955 459
or email gregstokes1932@gmail.com - North West Auckland

www.aucklandcams.co.nz
AUCKLAND CAMS
Henry van Vugt
Mobile 0274-860400
aucklandcams@xtra.co.nz
Camshaft Machine Shop
Unit 1, 32 Moselle Ave
Henderson, Auckland
Courier Delivery address
251 Don Buck Road
Massey, Auckland
COMPETITION • RACE • RALLY • PERFORMANCE CAMSHAFTS

Committee Contacts

- **Club Captain** Not Elected
nimafc.captain@gmail.com
- **Vice - Captain** Andrew Costello 021943063
nimafc.vicecaptain@gmail.com
- **Secretary** Martin Rees 0274964200
nimafc.secretary@gmail.com
- **Treasurer** Marlene Costello 0211186452
nimafc.treasurer@gmail.com
- **Newsletter** Karen Thomas 0274190191
nimafc.editor@gmail.com
- **Website** Andrew Costello 021943063
nimafc.vicecaptain@gmail.com
- Committee** Terry Costello 0274920642
tcmodelanz@gmail.com
- Grant Barry 0272870171
busesdirect@xtra.co.nz
- Shane Hegh 0272962965
shanehegh13@hotmail.com
- Mark Corbett 0275040878
meganmarkc@gmail.com
- Graham Thompson 0224329823
ureka1944@hotmail.com
- Don Windley 0211844598
don@echovalleyolives.co.nz
- Historian** Paul Smith 027 485 2234
smithfordnz@gmail.com



Christmas in the Park saw club members celebrating long-time member Stephen Upson's milestone birthday. Welcome to the Gold Card club Stephen.



Views and articles expressed in this newsletter are those of the authors and may be reprinted provided acknowledgment is given. Where articles have been reprinted, the NIMAFc recognises those authors and thanks them for allowing their article to be used in our club newsletter

Please send articles/reports/photos to the Editor by 20th of the month (or earlier if you can) in Microsoft Word or directly into an email. Editor will format to publish in Newsletter.

Thank you to all contributors to this newsletter



The last words are from the man himself.



There is no progress in merely finding a better way to do a useless thing.

Henry Ford



North Island Model A Ford Club Inc.

Website: www.modelafordclub.co.nz



Facebook: [Model A Ford Club](https://www.facebook.com/ModelAFordClub)