

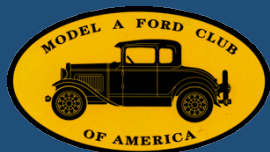
SULLIVAN TRAIL A's NEWS

Newsletter of the Sullivan Trail A's Model A Ford Club
- Founded 2008 -



"Coming together is a beginning; keeping together is progress; working together is success." - Henry Ford ● December 2025 – Volume 17 Issue 4

Where Friends & Model A's Meet - Northern Tier, PA & Finger Lakes Region, NY



PRESIDENT

Bill Wirz

VICE PRESIDENT

Jim Morris

TREASURER

Mark Harth

SECRETARY

Ruth Stoddard

DIRECTOR-AT-LARGE

Steve Organ

NEWSLETTER EDITOR

Jim Morris

WEBSITE LIAISON

Bill Wirz

WEBMASTER

Nathan Reimer



Sullivan Trail A's Meetings:

- Monthly
- 2nd Tuesday, Sept – May
- 7 PM
- United Methodist Church
1034 W Broad St
Horseheads, NY

CONTACT

stas2831@outlook.com

Links:

[Sullivan Trail A's Web Site](#)



[Sullivan Trail A's Facebook](#)



FROM THE PRESIDENT'S GARAGE

Hello Everyone!

Well, December is here. My Model A is snug in the barn now. I have her just about winterized. I did put some steel wool in the tailpipe and carburetor to prevent critters from making Molly a winter home. I also have peppermint spray and dryer sheets inside the car.

We had a fabulous year. We had many activities which most of us participated in. We also had a National Meet in Gettysburg, which was a lot of fun, as well as our overnight trip to Coudersport with the Lakeshore As. There are already plans for next year, with a highlight being the National Tour by MARC in May 2026 in our Finger Lakes area!

Our last get-together this year is our Holiday Party on December 13. I hope to see you there.

This is a special time of year. We especially have memories of holidays past and a special time to spend with our friends and family. I wish you joy, health, and peace during this season and in the years ahead.

Finally, thank you so much for electing me as your club President for 2026. It is an honor. God bless you all.

Happy Holidays! (with a little aah-ooo-gah)

Bill



Reminders

- There is no meeting in December. Instead, we will have our annual Holiday Party on Saturday, December 13, 2026, 12:30 – 4:00 PM in our meeting room at the First Methodist Church, 1034 W. Broad St., Horseheads, NY – See page 7
- 2026 Club dues are being accepted by Treasurer, Mark Harth. If you haven't paid your dues, please send your check for \$10 to Mark Harth, 4860 Satterly Hill Rd, Burdett, NY 14818 You may also give him your check at the Holiday Party on the 13th

MEETING MINUTES**MINUTES****November 11, 2025**

President Bill W. Called the meeting to order at 7:05 PM. 10 members were present in person and 1 on Zoom.

Today is **Veteran's Day**. Two members present are Veterans, and they were thanked for their Service. The Pledge of Allegiance to the flag was recited.

Treasurer's report - income from dues, 50/50; the 50/50 winner donated their winnings to the club. Expenses included the Zoom license. Current treasury remains about the same. Steve O. made a motion to accept the report and Ginny B. seconded. Carried.

Secretary's report - change the Norwich trip date from January 23 to January 24. One objection. Bruce B. made a motion to accept with the one change and Tom B. seconded. Carried.

New Business

- All votes for the 2026 officers have been counted, and they are unanimous to elect President Bill W., Vice President Gene N., Treasurer Mark H., Secretary Ruth S., Director at Large Max R. Secretary to cast one ballot to elect these officers.
- The **Holiday Party** will be on December 13th at the Horseheads United Methodist Church meeting room, 12:30-4 PM. Each member is to pay \$10, and the club treasury will pay \$10 for members. The menu is roast beef, turkey, ham, stuffing, vegetables, salads, fruit, relish tray, rolls, butter, and pies. There will be a gift exchange game, and each person is to bring a wrapped \$15 gift. There will be door prizes, a 50/50 raffle, and some other surprises. Money should be sent to Mark H. by December 6. No refunds after December 8.

Old Business**2026 events:**

- Officers will be installed at the January 13, 2026, meeting.
- The pancake breakfast at Fay's Sugar Shack will take place on March 21, 2026.
- May 2, 2026, will be the safety check at Auto Zone in Painted Post.
- The MARC Finger Lakes tour is May 11-14. Details are not yet known.

Discussion about the October Hershey trip. The weather was good this year. Tom B. got some parts for his '40 Mercury, which are in great condition and difficult to find. Max R. found several Model A parts in great condition. Gene N., Rich B., and Bill W. also found some items. Max R. needs some help making the wood parts for his Model A. He will get the plans. Several people offered to help him and Larry L offered his wood shop/sawmill to make parts. He has made some in the past and has the tools to do it.

Bill W. had a rattle in his Model A and he tried several things to stop it. Finally found that the tire bracket was loose and had to be tightened under the back seat. No more rattle!

Gene N. will bring refreshments in January.

The meeting was adjourned at 8 PM, and refreshments were served by Carole and Mark H.

Respectfully submitted,
Ruth Stoddard, Secretary

Editor's Note

NOTE

Newsletter Contributions Are Welcomed

The cover photograph features an unusual rear window. It's a small detail, but I find it interesting. The rear spare also catches my eye. My thoughts on these two details are on page 9. The "New Ford," our beloved Model A, was available in what standard colors and how many colors in 1928? The answer is on page 25. Do you have safety glass in your Model A? Do you know when Triplex Safety Glass was introduced? See pages 11-14.

**HAPPY HOLIDAYS! – Jim**

**Readers wishing to reprint content in this Newsletter are welcome to share content provided Sullivan Trail A's MAFC is cited as the source of what is reproduced. Thank you for this courtesy.
Questions? Please get in touch with the Editor at stas2831@outlook.com**

LOVE THOSE A'S

Some Photos Courtesy [MAFCA](#), [MARC](#), and [America in the 1930s](#) Facebook Pages



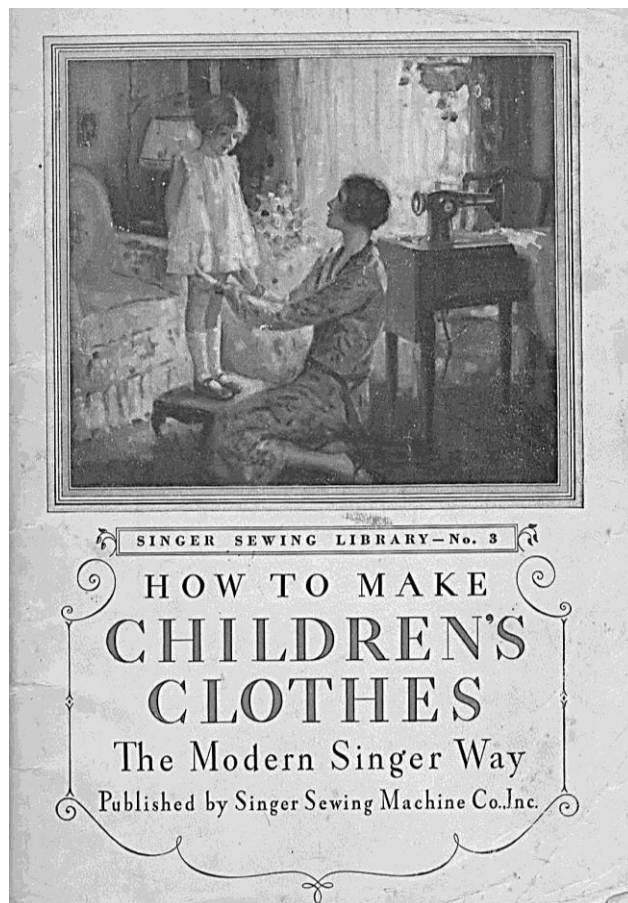
STITCHES IN TIME



How to make children's clothes

The sewing machine, patented by Elias Howe and further developed by Isaac Singer in the 1800s, revolutionized apparel production, shifting it from handcraft to industrialization. Home sewing declined in the 20th century as mass-produced, ready-made clothing became more affordable and convenient than hand-stitching garments. Here is a glimpse of a Singer booklet from the Model A era focused on making children's clothes from home. - Editor

"All who sew for children will find delight in this book. The simple methods, practical instruction, and valuable suggestions are so arranged as to be ready for instant use." "Modern sewing methods and a modern Singer sewing machine are essential that combine to make sewing at home recreational and economically valuable. This book speaks the language of both in a simple, usable way." – Inside front cover statement, 64 pages, copyright 1927 -1930, revised 1930



An Invitation

If you would know the full enjoyment of making lovely curtains and draperies for your home, as well as clothes for yourself and the children, make them on a Singer Electric. It will be a surprising new experience. Both hands are free, both feet at ease. Merely press the speed control, gently or firmly, and sew at any speed. Perfect, even stitching flows like magic. There is no thought of effort on your part, for hidden power is doing all the work. And in a short time your machine will have paid for itself through the many economies of home sewing.

We invite you to take this new Electric or any modern Singer into your own home and use it on your own sewing, without the slightest obligation. Any Singer Representative will bring you the model of your choice and give you an interesting demonstration. Or any Singer Shop will send you a machine to try on the Self Demonstration Plan.

Singer Sewing Machines

Square Yoke Dresses

ONE square yoke dress at least is in every baby's wardrobe, both its simplicity and its possibilities for ornamentation making it a very desirable type.

The construction of the square yoke dress is considered here more than its possible variations of tucking, embroidering, hemstitching, or insertion inserts, because when trimming is used, it is invariably put in before the yoke is cut, therefore making the decoration a simple matter and the construction the important one.

FIG. 18

FIG. 50

Bloomer Frocks

EVERY wee frock should have one or two pairs of bloomers made of the same material. As a rule the dress is made a trifle shorter than the bloomers, which is an advantage, because a dress that is made too long looks heavy or too grown up for a little girl.

Three types of bloomers are shown here. At *a* is shown the banded waist and elastic finished

FIG. 51

UPCOMING EVENTS

Our Hobby *On The GO!*

Meetings are on the **SECOND TUESDAY** of every month except June, July, and August
Our annual picnic is in June

The STAs regular monthly in-person meeting is @ 7PM
First United Methodist Church 1034 W. Broad St., Horseheads, NY

SULLIVAN TRAIL 2025/26 EVENTS

- **December 13, Sat, 12:30 - 4:00, Annual STAs Holiday Party**, at the Horseheads United Methodist Church. The food will be catered. The cost of your dinner will be \$10, and the Club will cover the balance. President Bill has recently emailed detailed information to all members. ??? : williamwirz@yahoo.com
- **January 24, Sat, 2026, at the Northeast Classic Car Museum in Norwich, NY.** A winter excursion (weather permitting) to see dozens upon dozens of antique and classic vehicles. STAs visited this museum in 2023, and we had a great time. Lunch at the Wild Owl Restaurant in Norwich will follow. More details will be in the December Newsletter. See the text boxes below!
- **March 21, Sat, 2026, pancake breakfast at Fay's Sugar Shack**, details to follow
- **May 2, Sat, 2026, Safety Check**, more information will follow after the New Year.

You might be surprised to find a car event in your immediate neighborhood if you click on Kevin's link and explore what's listed. If you've never followed the link, give it a try!

Link to Comprehensive Upcoming Events courtesy Kevin Yaggie: [Local Car Events](#)
LOCAL, REGIONAL, NATIONAL 2026 EVENTS



Wild Owl

MARC National Finger Lakes Tour

THE MARC NATIONAL TOUR

Join us in Beautiful
Finger Lakes NY!

Hosted by the
Finger Lakes Region
of MARC

MAY 11-14, 2026

**EXPLORE
FINGER LAKES**

MARK YOUR CALENDAR NOW!

For more information contact Meet Chairman
Paul Ganninger pnganninger@gmail.com
314-852-5591



Over 170 classic and vintage cars and 28 motorcycles are displayed in five connected, climate-controlled buildings at the Northeast Classic Car Museum. <https://classiccarmuseum.org/>

STAs 2025 Holiday Party

First United Methodist Church

Our Monthly Meeting Location

1034 W. Broad St., Horseheads, NY

SATURDAY DECEMBER 13, 12:30 - 4 PM

- Sliced roast beef, mashed potatoes and gravy
- Virginia baked ham
- Turkey
- Stuffing
- Hot vegetable blend
- Mixed green salad, Pasta salad
- Fresh-cut Fruit
- Relish tray
- Fresh bakery rolls and butter
- Apple and pumpkin pie with whipped topping
- Iced tea, lemonade, water



Cost is \$10 per person.

We will have a gift exchange, just like last year, gift cost \$15 or less.

We will also have drawings for door prizes and a 50-50.

TECHNICAL TIPS



Nu-Rex Pop-out-look-alike

Disclaimer! I don't own stock in the Nu-Rex company. The text below, from the Nu-Rex website [[Nu-Rex](#)], is informative and helpful if you have ignition switch problems. I've had original pop-out ignition switches in my A's and have replaced them with this Nu-Rex switch. Although my original switches were restored, regular use wore them out, and I had to have them refurbished at high cost. I decided to keep the original look, so I installed the Nu-Rex switches, which have worked exceptionally well. The key cylinder in the original moves in and out when you want to turn the ignition 'on' and 'off.' The Nu-Rex cylinder is fixed in the 'out' position. There are other ignition switches available in addition to the Nu-Rex. – Editor

The NuRex “pop-out-look-alike” Ignition Switch is identical in appearance to the original Ford “pop-out” switch, although it does not provide the “pop-out” motion. The NuRex “pop-out-look-alike” ignition switch fastens to the original dash just like the authentic “pop-out” and has the original nickel-plated brass keyhole and bezel just like Ford made. Still, it is a REAL switch and not just a grounding device like the original “pop-out”, and because it is a real switch, it can also be used with transistor ignitions when standard original “pop-out” switches cannot be used due to the damaging grounding effects on transistors. The NuRex “pop-out-look-alike-switch” is the first choice for many when a new replacement switch is necessary, simply because it looks authentic and is a real switch.



Nu-Rex ignition switch



Original mid-1929 pop-out ignition switch



Same switch as above with armored flex cable

The original Ford “pop-out” switches were also grounding devices and were initially designed to be an anti-theft device when used with the heavy flex conduit connected to the distributor. The function was to ground the points when the key was turned off and then make it very difficult to access the ignition switch wire, so hot-wiring theft was difficult.

Today, these original switches can fail due to age and may become less dependable after frequent use. Many replacement switches available today may require modification to the original dash or involve exposed or non-original fasteners on the outside of the dash, which spoils the authentic appearance of the dash. Some are simply poorly made.

The NuRex modern “pop-out-look-alike” replacement ignition switch is a true modern upgrade that can be used with any ignition system, requires no modification to the dash or car, preserves the original Model A Ford appearance, restores dependability, and provides the versatility to modernize other areas of the ignition in the future. The heavy flex conduit wire is also available and sold separately.



Looking for a car, selling a car? Have parts, want parts? Have other 'stuff' you need or want to sell? Free advertising right here. Contact your Editor to place your ad in next month's Newsletter.

Wanted: I'd like to buy a good 21" A wheel. **FREE!** March -April 2015 "Model A News" regarding getting more legroom in the front seat. Also, Model A parts: frames AA and A, front ends, rear ends, engines, and transmissions. All rusty, outdoors. I will load onto your truck or trailer. Bruce Bruckner 607-594-6331

For Sale: 1930 Model A engine with steel rolling engine stand. \$175 Jim M. More info: email or 607-351-9348

YOUTH OUTREACH



Give A Lift To The Kids!

The "Carburetor Basics" on the right should be on a technical page, not on a youth outreach page, correct? Well, it's on a page of the A-World Newsletter [youth newsletter of MAFCA], released for the first quarter of 2025 and intended to educate young people. The complete issue is found [here](#).

I believe the information on this part of the Carburetor Basics topic, available in its entirety on the Hoosier 'A' Ford Club website [carburetor basics], would be helpful for anyone reading it, including adult members of our Club! The Model A Basics pages are easier to read than what I've provided here. In addition to carburetor basics, the Hoosier page includes information on starting your A, brakes, ignition, and more. Take a look at this page, [model a basics](#), for all the topics covered on this excellent website.

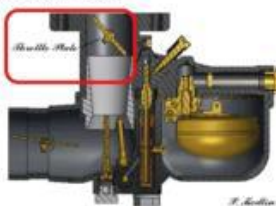
– Editor

Carburetor Basics

Illustrations from <http://modelabasics.com>

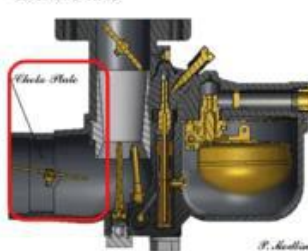
The Model A carburetor is really an ingenious piece of equipment. It was built with multiple jets that work to distribute fuel to the motor according to gravity and the amount of air flowing through them. Suction is created by the pumping of the pistons and this causes gas and air to flow through the carburetor into the engine. Each jet handles fuel differently depending on the amount of fuel and air flowing in. But today, we are just covering the basics of a few easy to understand controls.

Throttle Plate

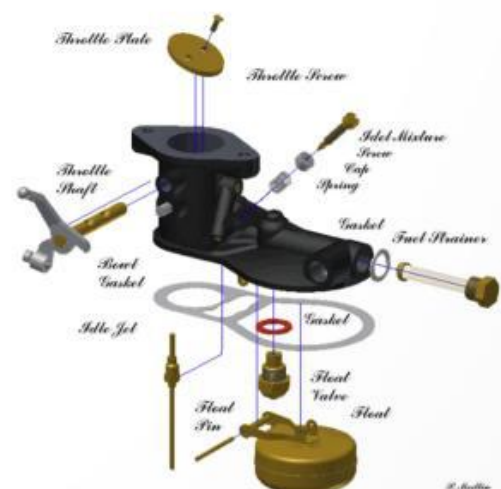


The throttle plate manages the amount of air flow that is delivered to the engine and is controlled by the (A) Throttle Lever and/or the (B) Accelerator inside the cab. That's the lever on the right side of the steering wheel and the gas pedal on the floor on the right of the driver's side.

Choke Plate



Pulling on the (C) Carburetor Adjustment Knob, (often called the GAV Gas Air Valve or the choke) inside the cab opens and closes the Choke Plate. Turning the GAV enriches or leans the fuel mixture flowing through the carburetor. This knob is the one on the dash on the passenger side of the car. When the engine is started with the choke closed, a greater vacuum is formed, pulling in a larger amount of fuel.



Cover photo: note the rear window shade, which you don't usually see in these old black and white photos. Also, there's a FOX or Oaks spare tire lock on the rear spare. The locks are nice accessories, and today some people restore them. I have information about restoring the rear and fender well spare tire locks if you need it. – Jim

ODDS 'n ENDS

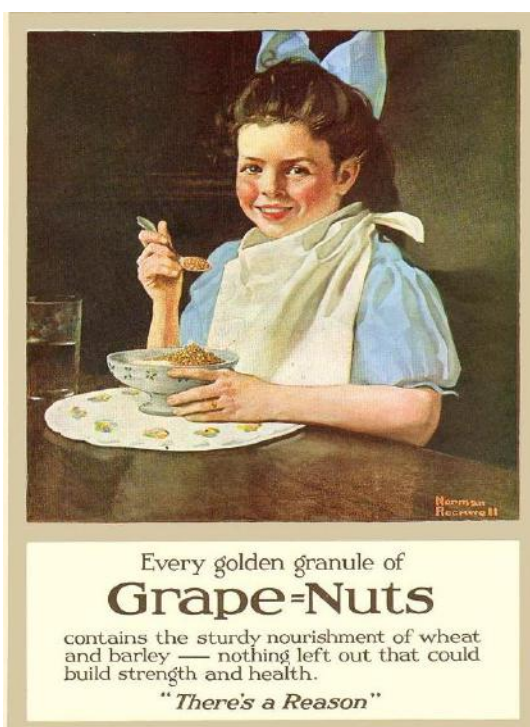
ODDS
&
ENDS

From the "A" Era

If you drove a Model A in 1928 or later and you had cereal for breakfast, here were some of your choices



Rice Krispies was released to the public by the Kellogg Company in 1928.

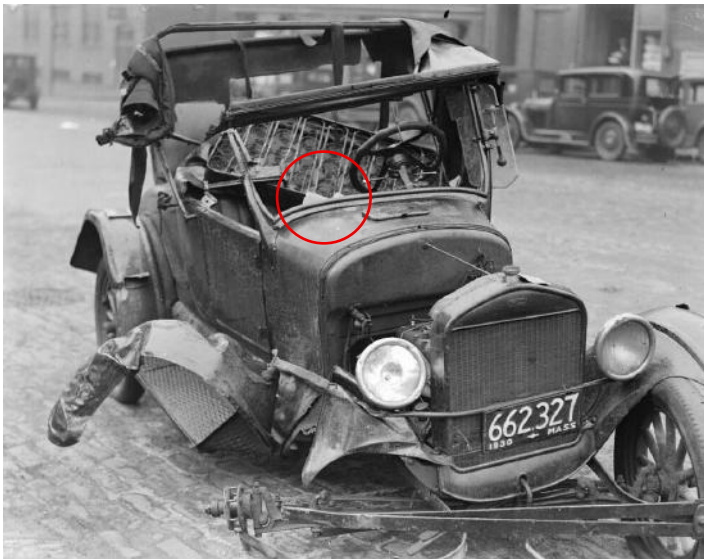


Grape nuts was introduced in 1897 --- Both are 1930 boxes --- Quaker Wheat was introduced in 1890

~ News From The Era ~

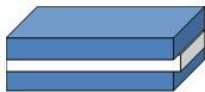
TRIPLEX GLASS – IMPROVED MODEL As' SAFETY by Jim Morris

In the early 1900s, before laminated (safety) glass became standard in cars, people involved in auto accidents faced the risk of going headfirst through their shattered, plate-glass windshields. The resulting severe cuts around the neck were morbidly called "wearing a glass necklace."



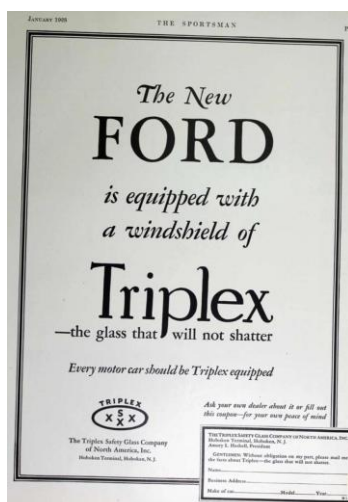
c1923 Model T, windshield glass shards along windshield frame

When it was first created, safety glass consisted of two flat pieces of glass with a plastic-like celluloid interlayer, which is why it was called "Triplex." When the glass broke, it remained intact because the celluloid held the pieces together, reducing the risk of cuts to passengers.



Blue = glass, white = celluloid

Ford researched, tested, developed, installed, and actively promoted this innovative safety glass in its **NEW FORD**.



January 1928

Story number one, which is the main account of the origin of Triplex Glass in Fords, is detailed in Peter Winnewisser's book, *The Legendary Ford.* In his book, he describes Harold Hicks, a member of Ford's engineering design team, having an accident on July 28, 1927, involving a Model T, during which Hicks was testing the prototype Model A for economy, speed, and acceleration. He was thrown through the windshield and was bleeding heavily. "Later ... looking at the wreck of the car, [they] decided that laminated (safety) glass would be used in the Model A windshield."



An example of Triplex Glass integrity in an original Model A

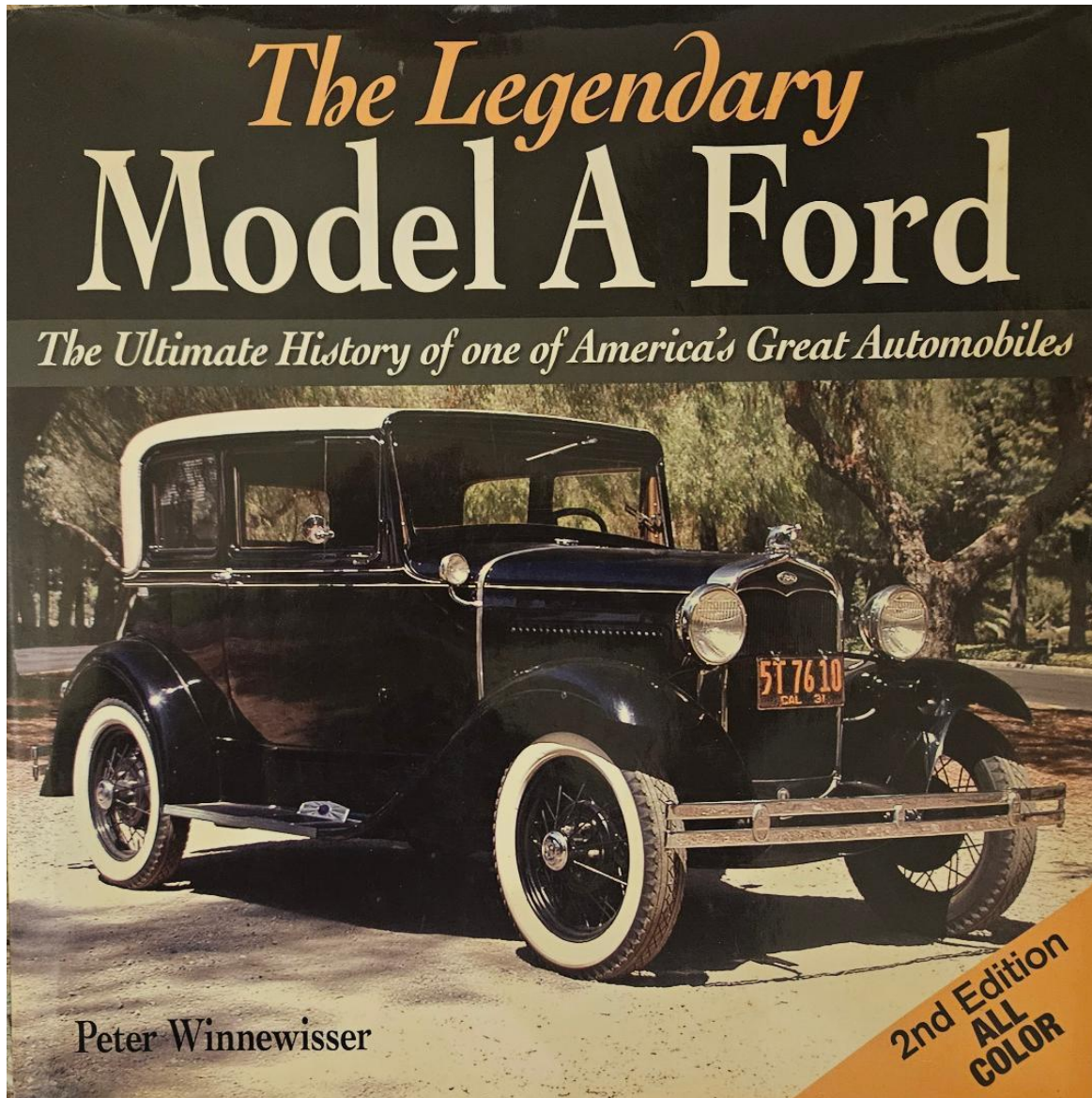
Story number two reveals additional details that your Editor uncovered during research for an article on Triplex Glass in MAFCA's January/February 2005 Restorer magazine. I found evidence that Henry Ford's decision to equip the New Ford with Triplex Glass may have begun before Hicks' accident. In the article, I explain that Henry was involved in a car crash on March 27, 1927, four months before the Hicks accident, and that the Triplex Glass company not only sent a get-well **CABLEGRAM** to Ford on March 28, 1927, but also started communicating with Henry in October 1924 about their safety glass and its use in Model Ts. Ford waited until 1927.

| | | | |
|--|--|--|--|
| A WESTERN UNION | | ANGLO-AMERICAN TELEGRAPH Co. Ltd. | |
| WESTERN UNION TELEGRAPH COMPANY. | | ANGLO-AMERICAN TELEGRAPH Co. Ltd. | |
| CABLEGRAM. Via Western Union. | | | |
| 0357/CK LONDON 30 31 1012A 1927 MAR 28 11 15 = II FORD = DETROIT GENERAL HOSPITAL DETROIT (MICH) MI REGRET TO HEAR OF YOUR ACCIDENT. TRUST YOU HAVE NOT BEEN CUT BY BROKEN GLASS. FIT TRIPLEX AND BE SAFE | | | |

Ford was one of the first auto manufacturing companies to use Triplex Safety Glass for windshields in all its vehicles.

Peter Winnewisser September 16, 1930 – September 26, 2025

I want to take this opportunity to share with STAs members a little about Peter's key contributions to the Model A hobby. Peter founded the Mohican Model A Ford Club in 1960 and started the annual Mohican Club's Wampsville Antique Car Show, which has been a premier event every year since its inception. His monthly article, "Watching the Fords Go By," in Old Cars Weekly, and his book, "The Legendary Model A Ford," were beloved by vintage car enthusiasts nationwide. My father was a member of Peter's Model A Club, even though he lived many miles away in Ithaca, NY, because he met a Mohican Club member at a car show, hired him to restore his 1931 Roadster, and thus became good friends with Peter. I also knew Peter and enjoyed many conversations with him at the Wampsville Car Show. He was kind, gentle, and warm-hearted. He referenced my 2005 Restorer article about Triplex Glass in his second edition book (pictured below), and I remain deeply grateful for his kindness. He will be missed by many. – Jim [Peter Winnewisser](#)



Peter's book is a must-have for your Model A library

I should mention that the original celluloid interlayer in early windshields becomes brittle and discolored with age. Modern safety glass usually uses polyvinyl butyral (PVB) vinyl. – Editor

Triplex

Removes the Menace from Motoring

Triplex is glass modernized—
scientifically safe

TRIPLEX cannot shatter—cannot fly

TRIPLEX cannot separate—cannot cut

TRIPLEX cannot cause injury even under
terrific impact

TRIPLEX provides absolute protection—
from broken glass—no flying splinters—no
razor-sharp, jagged edges can touch you.

TRIPLEX is a clear-vision Safety Glass
composed of two sheets of especially se-
lected glass and a center sheet of plastic
welded together to form a single sheet.



Millions of motorists are having their ordinary glass
replaced with TRIPLEX. Delays are dangerous. Have
your car equipped today.

TRIPLEX is manufactured under U. S. Patents
and Patents Pending.

TRIPLEX SAFETY GLASS COMPANY
OF NORTH AMERICA, INC.
CLIFTON, NEW JERSEY



WHY YOU SHOULD USE TRIPLEX



TRIPLEX—the only world-wide organization
manufacturing and distributing non-shatterable
glass.

TRIPLEX was first made in 1912. It is the first
and hence the oldest, company making safety
glass.

TRIPLEX was used by the allied armies during
the world war for windshields and goggles.

TRIPLEX is time-tested, brought to perfection
through constant development and observed per-
formance over a period of eighteen years.

TRIPLEX processes for assuring perfect quality,
uniformity and durability are the results of orig-
inal TRIPLEX investigations and research—and
are fully protected by patents.

13,000,000 square feet of non-shatterable glass
produced and sold throughout the world during
1929. 11,000,000 of this total was TRIPLEX.



The Triplex Factory at Clifton, N. J.
The Largest Laminated Glass Factory
in the World.



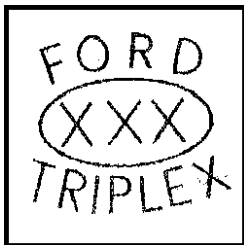
GLASS the menace!



Now



GLASS the Protector



The Triplex logo on the left is one of nine different
logo styles found on various glass surfaces
(windshields, back and quarter windows, wind
wings, rear doors) of original Model A's,
depending upon body style.

Features of the Ford car

Sturdy body construction ↔ *Ease of control* ↔ *Four Houdaille hydraulic double-acting shock
absorbers* ↔ *Triplex shatter-proof glass windshield* ↔ *Fully enclosed, silent six-brake system*
↔ *Quick acceleration* ↔ *55 to 65 miles an hour* ↔ *Smoothness, balance and security at all
speeds* ↔ *Vibration-absorbing engine support* ↔ *Choice of colors* ↔ *Tilting beam headlamps* ↔

Theft-proof ignition lock ↔ *Reliability* ↔ *Economy* ↔ *Long life*



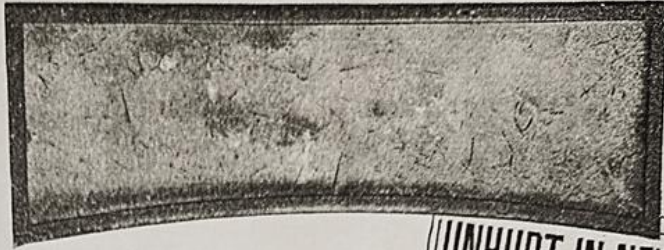
Hearst's International-Cosmopolitan for August 1929



Ford News

February 15, 1928

Windshield Glass Protects Owners



This standard Model A windshield has been struck twenty-five blows with a steel hammer. While the glass has cracked, not once has it been shattered. Right—Clipping from eastern newspaper, telling of actual accident in which Model A owner escaped serious injury largely through the use of Triplex.

All Ford Model A cars are equipped with Triplex shatterproof windshield glass. It is also available in the various Lincoln models as optional equipment. In case of accident there is no flying glass to injure or disfigure. The glass will do no more than crack.

During the World War, aviators were protected by goggles and windshields made of this material. Glass for submarines, and safety screens for high speed submarine chasers, were made of it.

Flying glass, usually from windshields, is responsible for 65 per cent of all injuries in the 700,000 annual automobile accidents. The shatterproof glass, which by actual test is 50 per cent stronger than plate glass of equal thickness, will not do more than crack. There are no flying splinters or jagged edges. It will also soften the direct rays of the sun and break headlight glare. It relieves condensation on the glass of closed cars during winter driving. Although flexible under impact, it cannot be cut with a diamond.

Seventeen distinct operations are re-

UNHURT IN NEW FORD SMASH-UP!

NEW YORK, Jan. 14.—Distinguished by having the first accident in one of the new Fords, Edward Price, 26, of Everett, Mass. is a hero today in his home town. Price was driving his new coupe along the highway through Norwalk, Conn., when a passing car abruptly cut in on him and forced him off the road on a hill. His car crashed into a pole and Price was hurled forward, his head striking the windshield.

Triplex, the flexible, non-shatterable glass, which is standard in the new Fords, stood up under the crash, according to Price, and an him vital injuries brought him no harm. At the same time, the rubber composition steering wheel doubled up, according to witnesses, saving Price's chest from hurt. The car's body was badly smashed.

quired in its manufacture. Two pieces of thin specially selected ground and polished glass are coated with chemicals to make a cement coating; a layer of pyroxylin plastic is introduced between the two coated sheets, and by means of heat and pressure the two are united to form a single sheet of laminated glass.

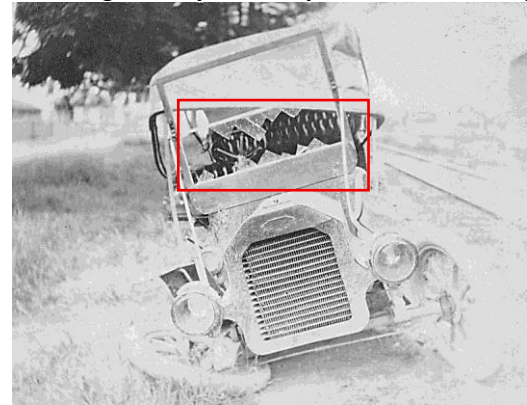
The laminated sheet is finally sealed at all edges to prevent action of air and moisture on the plastic and the chemicals.

Shatterproof glass cannot be cut and fitted as ordinary glass, but must be manufactured to the size required. It is not truly unbreakable, but when broken, each small particle of glass adheres firmly to the pyroxylin inner layer with the result that flying pieces and jagged edges are eliminated. When severely damaged, the entire piece usually remains within the windshield frame.

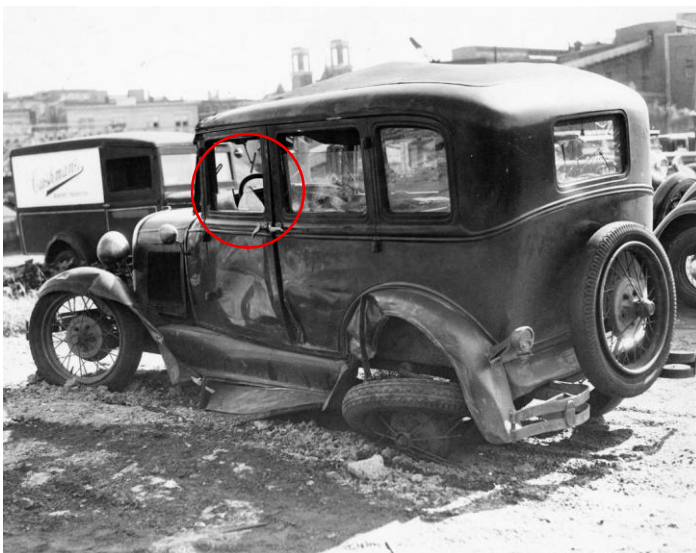
Windshield glass protects owner, *Ford News*, February 15, 1928.



Windshield glass stayed mostly intact after the impact



Unknown make/year, broken windshield – glass necklace?



Driver-side window's broken plate glass illustrates high injury risk



Passenger's head hit the windshield, Triplex held

IMAGES BEHIND US

*Hershey 2025*

Several STAs members enjoyed Hershey this year... including Bill W. & Max R. (both met Paul Shinn), Gene N., Rich B., Jim M., and Tom B.





1931 Ford AA Camp Truck

Back in the early days of House cars, only the wealthy could afford a well appointed home on wheels. Many house cars were home built. It is unknown who built this vehicle, but it is clear that this unit is very well built. Most were built by a custom coach builder. The House Car was first seen starting in the 1920's. Most were built with wood and masonite materials that over time did not fair well from rot. This survivor was located in a barn in 1999 had been well restored by White's Family. This vehicle has been featured at many highly regarded Auto Shows.

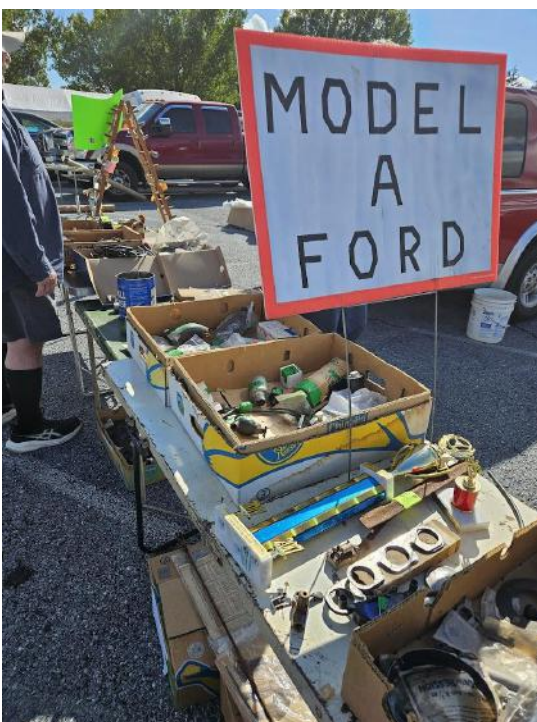
Ford AA had a top speed of 35 mph

Materials: Old growth woods, Masonite, Vinyl

Engine: Flat Head 4cyl. 40 horsepower

Transmission: Manual 3 speed





Here are some of the parts vendors and service providers I visited with at Hershey 2025. I'm sure I missed some. Hershey is an opportunity not only to find those original parts you need, but it also offers time to meet with people in the Model A business to ask questions, get answers, and develop good relationships. – Editor



Michael Francis, CLASSTIQUE UPHOLSTERY



THE CARB SHED, Dennis & Denise Shedrow, Earl Park, IN. 219/208-9048



RON'S MACHINE SHOP engine rebuilding, Shandon, OH, 513-738-7353



BUCKEYE AUTO ELECTRIC, Painesville, OH, 1.800.USA.5561

I purchased a rebuilt starter from Buckeye – Editor



I have three SCHWALM'S rebuilt Model A engines in my As, they are great – Editor

BONUS PAGES

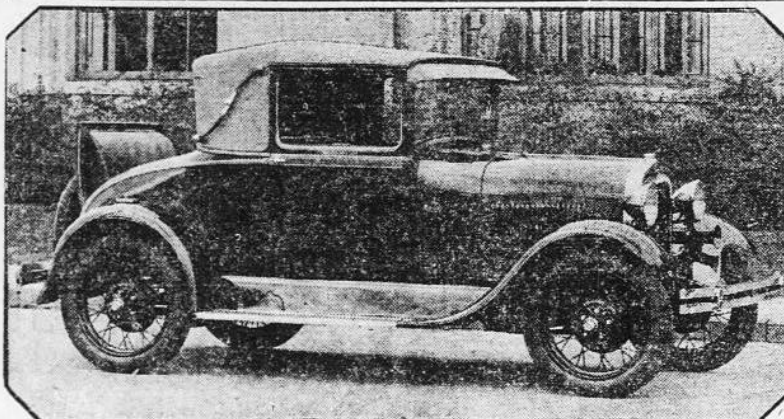
Bonus

MORE GOOD STUFF

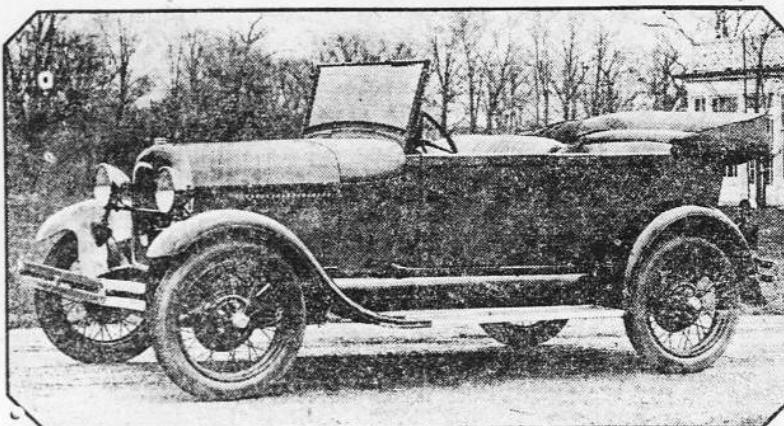
THE LANSING STATE JOURNAL, SATURDAY, DECEMBER 3, 1927

AUTOMOBILE PAGE

More Pictures of the New Ford Car



THE NEW FORD SPORT COUPE. NOTE THE RUMBLE SEAT — SOMETHING never before seen on a Ford.



THE NEW FORD TOURING CAR. NOTE HOW THE HOOD AND RADIATOR lines have been changed.



SANTA IS HAPPY
FOR NOW WE CAN MAKE

**Prompt
Delivery,**

—OF—

**NEW
FORD
CARS**

ALL BODY TYPES



*And Santa Knows
Everyone Will
Be Happy*

IF THERE IS A

NEW FORD

AT THE DOOR ON

**Christmas
Morning**

We'll Be Glad to Co-Operate
With Your Santa and Have
Your New Ford Ready For
You Christmas Morning

Lincoln Ford Fordson
McCarthy Motor Co
IOLA-KANS.

JUST PHONE 893



Hubbard VENTILATING-EAVES for the NEW FORD windows



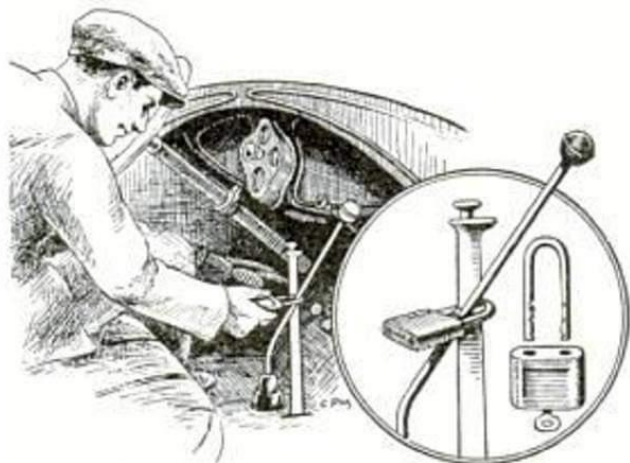
U. S. Patents No. 1,609,409 and 1,669,396.
Canada Patent August 31st, 1926.

A specially designed Ford accessory that has already gained national popularity! One of the very few products that dealers can merchandise with the new Ford....an extra profit on almost every car sale. Hubbard Ventilating-Eaves give a smart appearance and make possible a new riding comfort that eliminates all disagreeable drafts. Quality in keeping with the outstanding smartness of the new Ford Car.

Hubbard Ventilating-Eaves are made of the very best materials with solid construction throughout. They are furnished in either clear or transparent colored glass to harmonize with Ford color schemes and to serve as protection against the sun rays or bright lights. Once installed they become a permanent, built in, ornamental and practical device for greater driving comfort. One size fits doors of the Tudor Sedan, and all coupes.

WRITE TODAY!—A request will bring full information on this outstanding accessory. Don't neglect this opportunity to render a profitable service.

Made By
HUBBARD
PRODUCTS CO.
KOKOMO, INDIANA



Easy Method of Locking Gear-Shift and Brake Lever on Model-A Ford

Gear-Shift Lever Locked in Neutral

Owners of model-A Fords can lock the transmission in neutral by lifting the gear-shift lever out of its socket and swinging it across the brake lever, which is pulled back to braking position. A padlock of the type shown in the detail is then slipped around the gear-shift and brake levers.



The Oil for
Your New
FORD

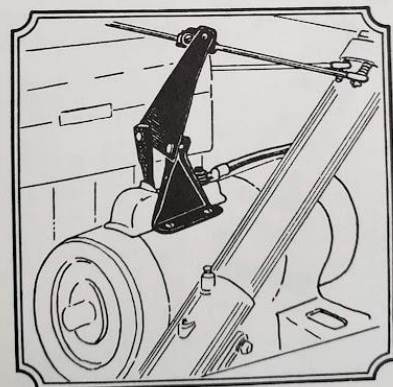
Your New Ford Should Have This Oil....

LEADING FORD DEALERS ENDORSE QUAKER STATE QUALITIES

The HAN-D Starter

For Model "A" Fords

(Patent Applied For)



Installed in 10 Minutes—Using Ford Switch
July, 1930

SALMON CUKE SALAD

Depression Era Recipes, by Patricia R. Wagner

1 head of lettuce
2 cucumbers, sliced
1 onion, minced
Salt & pepper
1 c. salmon, shredded
Boiled dressing

Break apart the lettuce, wash and dry the leaves, and place on salad plates. Put on cucumber slices, minced onion, salt, and pepper. Beat together the salmon and boiled dressing. Pour over vegetables.

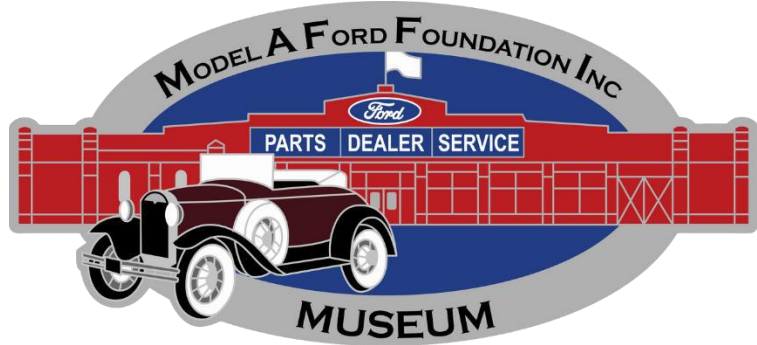


1930 state-of-the-art kitchen

This kitchen was the state-of-the-art test kitchen for Ladies Home Journal in 1930. Check out the range. It's a 1930 Magic Chef. The floor is linoleum, easy to clean, and all the rage!

MAFFI Minute

November 2025



Winter is approaching here in the Midwest, and the museum is still rapidly working on new and updated exhibits! Darwin Schafer donated a really special unrestored and fully original 130 De Luxe Delivery, which was originally used by a funeral home for flowers. This will be used during Model A Days to demonstrate corn shelling since it has a power take-off system for a belt (though personally, I might try and sneak an ice cream maker on it!).

Andrew Oliver of Connecticut won the sweepstakes on the 1928 Phaeton, and Kris Wilson of Missouri won the rebuilt engine.

Now that the trustees have had a chance to go over the numbers for the 2025 Model A Days, it looks like it was a great success, thanks to all our hobbyists who came to support the museum. There are plenty of ways to get involved with helping, and still plenty of ways to donate to the museum, between the My-A-Program, Brick Memorials, and even regular donations. As we get towards the Holiday Season, this is something great to keep in mind, especially for your local club.

Keep on motoring!

John Grossheim, Trustee and Secretary of MAFFI



Darwin Schafer's unrestored and entirely original 1930 De Luxe Delivery



President's Message – December 2025

2025 December Flying Quail As my tenure as president of the Model A Ford Club of America winds to an end, I look back fondly on the past year. I feel blessed to have worked with so many great and wonderful Model A family members and volunteers, full of caring gestures that can only be compared to a family. When Monika and I first rejoined MAFCA some 15 years ago, we were immediately taken in by the members of our local chapter, like the Branams, Briggs, Mundays, Corneliuses, Blackwells, and so many more. And this continues to this day on a national level as we have met and been accepted by wonderful people like the Lindens, McCords, Shinns, Whitingtons, Beggs ... well, you know how it is. And although my service has been difficult at times, wonderful folks have stepped up to serve on the MAFCA Board, including Jay McCord, Doug Linden, and David Frazee. All three of these individuals volunteered to serve after three vacancies appeared. And I would be remiss if I didn't mention Sherry Winkinhofer, Dave Krill, Paul Shinn, Happy Begg, and Bill Truesdell. Thank you all for your support. All three specialty committees will soon be functioning at full capacity, and revision 5 of the Restoration Guidelines will also be completed, a task that has taken several years to achieve. Thanks to all these folks who serve our membership with no compensation other than a pat on the back and a favorable mention. Thanks to Dan Morris, who stepped up to chair the Restorers Class committee and will serve as Chief Evaluator at the National Meet in Pendleton, Oregon. And a huge thanks to Robert Mack for stepping up as editor of this publication, the Flying Quail, and to our new webmaster, Shelby Solomon of Dallas, Texas. Look for great things from Shelby! As most of you know, the month of June was a busy one for me as I endeavored to drive my 28' Tudor across America, Eastbound with my grandson Max and homebound with friend and fellow Model A enthusiast Doug Diller. Great memories were made and new friendships forged as we met and interacted with MAFCA members all across the US. And this won't be the last grand adventure with a grandson; Max's younger brother Pip has expressed interest in doing a similar drive, but this time in a Northerly direction through the Pacific Northwest and Western Canada. Plans are to leave immediately following the National Convention in Pendleton. I'll be sure to include you all in the adventures through social media, so stay tuned for whatever comes our way. And you who are reading this know of the importance of staying connected through this publication, the Flying Quail, but it seems to be a best-kept secret. Any and all MAFCA members can be included in its distribution, and so it's up to us to spread the word. At the same time, we would like to hear from you about the content you would like to see here. Signing up is as easy as pie. Just tell your friends to visit the MAFCA website, open the Publications dropdown, and click the Flying Quail button. If there is something you'd like covered or topics to be discussed, just contact the FQ editor via email at: flyingquail@mafca.com. Please spread the word. Only 20-25% of my home chapter even know it exists, and many of them aren't even registered to receive it. And finally, I'd like to welcome the newest members to the National Board of Directors for MAFCA in 2026: Trisha Evans from Texas, Dennis Thompson from Utah, Doug Clayton from California, and returning to serve out another two years, Paul Shinn. All these folks bring great depth and experience to our National Board. There is so much ahead of us in the coming years, with the 100th anniversary of Route 66 and the 100th anniversary of our beloved Model A Ford. The folks in the Blue Mountain A's of Pendleton, Oregon, are planning a stellar Conven on with all the trimmings of a National Meet. And as Jack Remillard says: "This ain't our first rodeo". Visit their website to sign up as soon as you can and book your accommodations, so you don't miss out on all the fun! [https:// www.2026mafcanationalconvention.com/](https://www.2026mafcanationalconvention.com/)



Farewell until we meet again on the highways and byways!

Ed Tolman – 2025 MAFCA President

Don't miss this: December 3rd – 6th, 2025, MAFCA Annual Awards Banquet, Mobile, Alabama
hosted by the *Gulf Coast Model A Club!*
 Click here for details: [banquet](#)

The Model A Restorers Club, Inc.

THE *running* BOARD REPORT

From Tom Hovetter, President and Jim Zimmer, Director of Regions

December 2025

Membership in MARC has increased this year over last year. This after declining for many years. This is Very Encouraging for our hobby! Many thanks to Regions who have encouraged their new and existing members to either take advantage of our free 12 month membership (non MARC members, digital magazine) or take our regular membership and receive the award winning *Model A News* magazine. Please continue to invite your members and anyone interested in our hobby to join.

As you may know, we are updating the *Driver Class Judging Standards*. For example, some of these changes include the acceptance of fiberglass fenders, later Ford front and rear axles and leather or vinyl upholstery material for all years/models. The updated standards will be published soon. Make plans now to enter your Model A in Driver Class judging at French Lick in July!

Recently we asked Region Presidents/Directors to email your Region's logo, in an image, PDF or similar format, for inclusion in our updated website. We have received many, but are missing many more. You will want your logo to be proudly displayed! If you haven't already, please email a copy of your logo to the MARC office at modelarestorersclub@gmail.com or to Jim Zimmer at jwzimmer9119@gmail.com.

Additionally, Larry Shepard is looking to compile a list of Model A Mechanics to use as a resource to help fellow Model A owners with mechanical questions. Please volunteer by emailing Larry at marctech@modelarestorers.org.

Certainly we are all looking forward to the upcoming MARC Finger Lakes Tour next May. Online registration forms will be available on December 1st and hotel reservations will open on December 10th. Plan now to attend another great MARC event in a beautiful part of our country!





Benefits in a car club include:

- ✓ New friends and fellowship
- ✓ Learning opportunities
- ✓ Activities like tours, car shows, picnics, breakfast runs, holiday parties, and tech outreach help
- ✓ Great magazines and newsletters
- ✓ Tire kicking
- ✓ National Club news and activities



SULLIVAN TRAIL A'S:

[Sullivan Trail A's web site](#)



MODEL A RESTORER'S CLUB:

[MARC web site](#)



MODEL A FORD CLUB OF AMERICA:

[MAFCA web site](#)



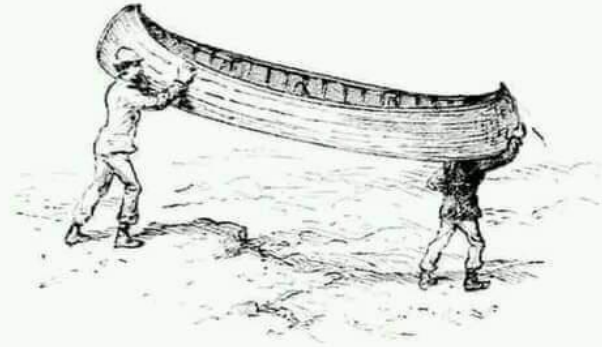
MODEL A FORD FOUNDATION, INC.:

[MAFFI web site](#)

Answer to the colors question from page 3

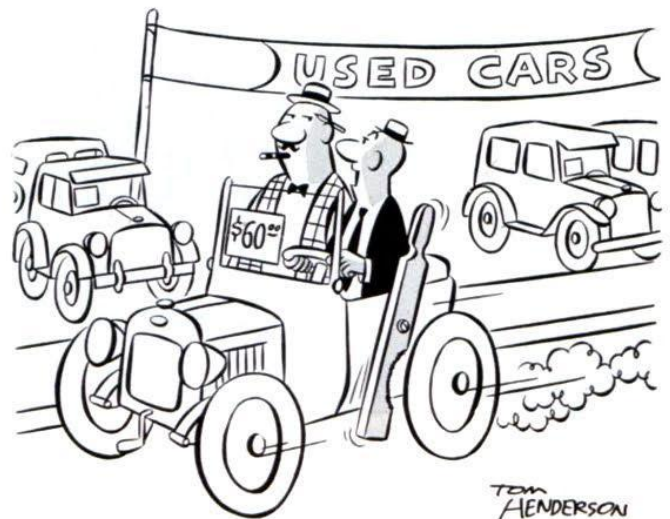
There were four color choices available for 1928 Model A models: Niagara Blue, Arabian Sand, Dawn Gray, and Gunmetal Blue. The finish was pyroxylin lacquer. Additionally, the initial offering in 1927 included six body types: Sport Coupe, Coupe, Roadster, Phaeton, Tudor Sedan, and Fordor Sedan, as well as a truck. The Fordor was not available until late May 1928.

Did You Know?

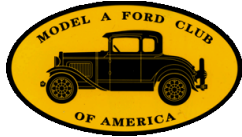


Before **water** was invented, people had to **carry** their boats around!

Kids mispronouncing things is super adorable but at some point I will have to tell my daughter we don't put Farmer John cheese on spaghetti.



How quickly did you see the humor in this Henderson cartoon?



Where Friends & Model A's Meet - Northern Tier PA & Finger Lakes Region

Sullivan Trail A's APPLICATION FOR MEMBERSHIP

Name(s): _____
 Address: _____

Home phone number: ... _____
 Cell phone number: _____
 Work phone number: _____
 Email address: _____

If you're a member of the Model A Ford Club of America (MAFCA) and/or Model A Restorers Club (MARC):
 MAFCA Membership Number: ... _____
 MARC Membership Number: _____
 Annual dues for Sullivan's Trail A's: \$10.00

Do you own a Model A or A's? Would you like to tell us about it/them?

Do you have special knowledge, expertise, or interests you'd like to share at this time?

The **Sullivan Trail A's** website offers more information about the Club (right-click, then click 'open hyperlink' for both):

[website](#)

Our **Facebook** page:

[Sullivan Trail A's Facebook page](#)

MAFCA AND MARC membership offers national "A" news, commentary, articles from technical to touring, photographs, classified ads, and more. **The Restorer** (MAFCA) and **The Model A News** (MARC) are terrific bi-monthly magazines included in the membership.

Sullivan Trail A's meets the second Tuesday, 7PM September – May, First United Methodist Church, 1034 West Broad St. Horseheads, NY. Bring your dues and membership application to one of our meetings or mail \$10 annual dues (please no cash, check made out to **Sullivan Trail Model A Ford Club**) and application to: **Mark Harth, 4860 Satterly Hill Rd, Burdett, NY 14818**

Dues paid: check _____ cash _____ rec'd by: _____ date _____

5/08 Rev; 11/12/2020; 4/20/23